



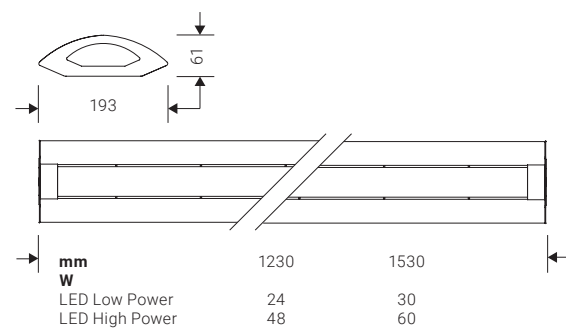
SMART SYSTEM

SMART SYSTEM's simple lines and low overall cost make it perfectly suited to a wide range of projects from offices and schools to other public sector buildings. A technical solution designed with the installer in mind, the system is simple to use from design stage through to final installation.

Design Esse-ci

Technical specifications at page 296

η	>95 lm/W	
UGR	<19	
CRI	>80	
IP	20; 40	





SMART SYSTEM



Design
Esse-ci

DESCRIPTION

SMART SYSTEM's simple lines and low overall cost make it perfectly suited to a wide range of projects from offices and schools to other public sector buildings. A technical solution designed with the installer in mind, the system is simple to use from design stage through to final installation. Now available with integrated LED technology for optimum energy saving and longevity. Produced from powder coated pressed steel and fitted with the fast-fit jointing system, facilitating quick and easy installation. Smart can be installed as an individual module or linked together in long, continuous runs. Pattern forming is also possible with a range of pre-wired jointing pieces. The bi-directional light distribution is achieved by recycling some of the direct emission.

SPECIFICATIONS

350mA integrated Driver; Fixture with end caps included
Colour temperature: 3000K/4000K; CRI>80; Mac Adams 3
Life Time 50.000 h - 5 years complete warranty
Eye safety: risk-free (RG 0) in accordance with EN62471:2009

FLUX MAINTENANCE

CURRENT	L90/B10	L90/B50	L80/B10	L80/B50	L70/B10	L70/B50*
350mA	12.000h	18.000h	26.000h	39.000h	42.000h	> 60.000h

* E.g. L70 = guaranteed luminous flux of the entire luminaire 70%
B50 = 50% of the diodes may have a flux reduction below 70%

OPTICS

Direct or direct/indirect emission with DPL technology diffuser (UGR<19)

BODY

Steel body painted with epoxy powder coating.

LEGAL REFERENCES

Conforms to CEI EN 60 598-1, UNI EN 12464-1.

CERTIFICATIONS

CE IP 40
ErP class: A⁺⁺

COLOURS

White RAL 9003 - Code: B
Grey RAL 9006 - Code: C2

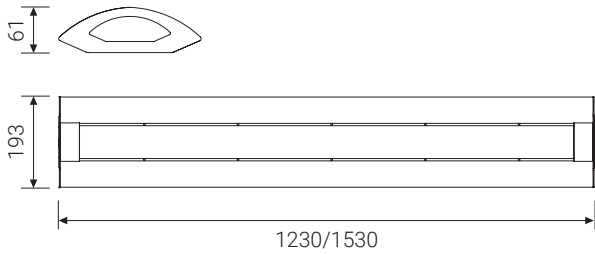
ON REQUEST

- Wiring DALI dimmable - Code: RDD (verify the version available)
- Wiring DIM2mains dimmable - Code: DDM (verify the version available)
- Wiring with emergency kit - Code: EM for 1 hour / EM3H for 3 hour (verify the version available)
- Colour Temperature 5000K
- CRI>90 Premium Version (available for HP version)

SMART SYSTEM LED DPL LOW POWER

OPTIC

Direct emission with DPL technology diffuser (UGR<19).

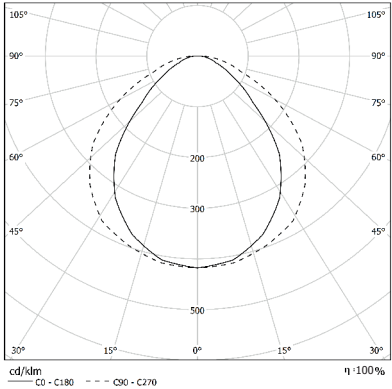


Module complete with headers and suspensions
(suspension length 1500mm) with Fast Click system.

COD	💡	lm	mm
65DR24DPLL4	24W 4000K	2280	1230
65DR30DPLL4	30W 4000K	2850	1530
COD	💡	lm	mm
65DR24DPLL3	24W 3000K	2208	1230
65DR30DPLL3	30W 3000K	2760	1530



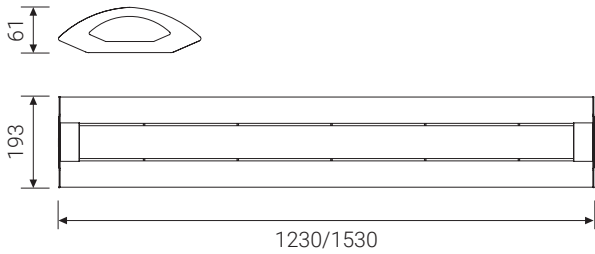
IP 40 A++



SMART SYSTEM LED DPL LOW POWER Double emission

OPTIC

Direct/indirect emission with DPL technology diffuser (UGR<19).

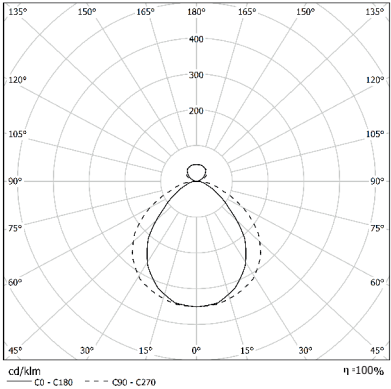


Module complete with headers and suspensions
(suspension length 1500mm) with Fast Click system.

COD	💡	lm	mm
65DI24DPLL4	24W 4000K	2184	1230
65DI30DPLL4	30W 4000K	2730	1530
COD	💡	lm	mm
65DI24DPLL3	24W 3000K	2088	1230
65DI30DPLL3	30W 3000K	2610	1530



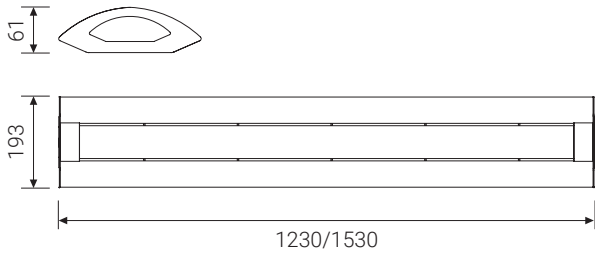
IP 40 A++



SMART SYSTEM LED DPL HIGH POWER

OPTIC

Direct emission with DPL technology diffuser (UGR<19).

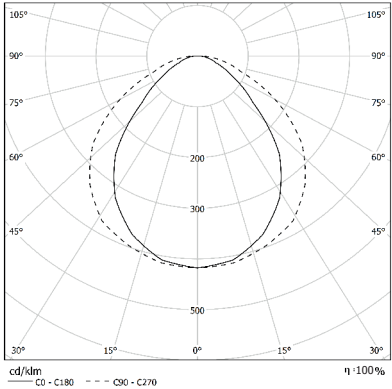


Module complete with headers and suspensions
(suspension length 1500mm) with Fast Click system.

COD		lm	mm
65DR48DPLL4HP	48W 4000K	4560	1230
65DR60DPLL4HP	60W 4000K	5700	1530
COD		lm	mm
65DR48DPLL3HP	48W 3000K	4416	1230
65DR60DPLL3HP	60W 3000K	5520	1530



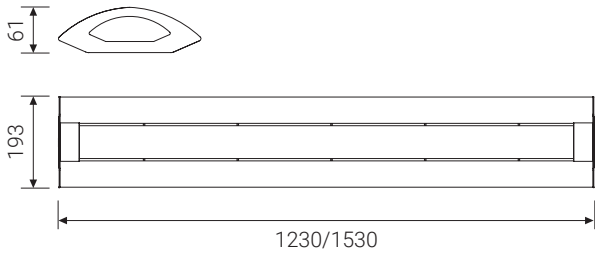
IP 40 **A++**



SMART SYSTEM LED DPL HIGH POWER Double emission

OPTIC

Direct/indirect emission with DPL technology diffuser (UGR<19).

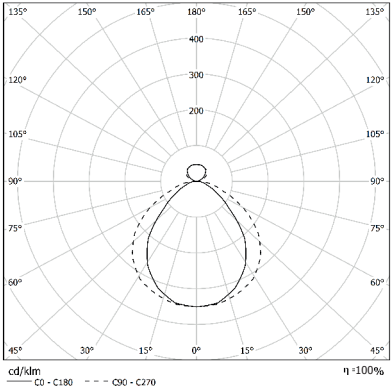


Module complete with headers and suspensions
(suspension length 1500mm) with Fast Click system.

COD		lm	mm
65DI48DPLL4HP	48W 4000K	4368	1230
65DI60DPLL4HP	60W 4000K	5460	1530
COD		lm	mm
65DI48DPLL3HP	48W 3000K	4176	1230
65DI60DPLL3HP	60W 3000K	5220	1530



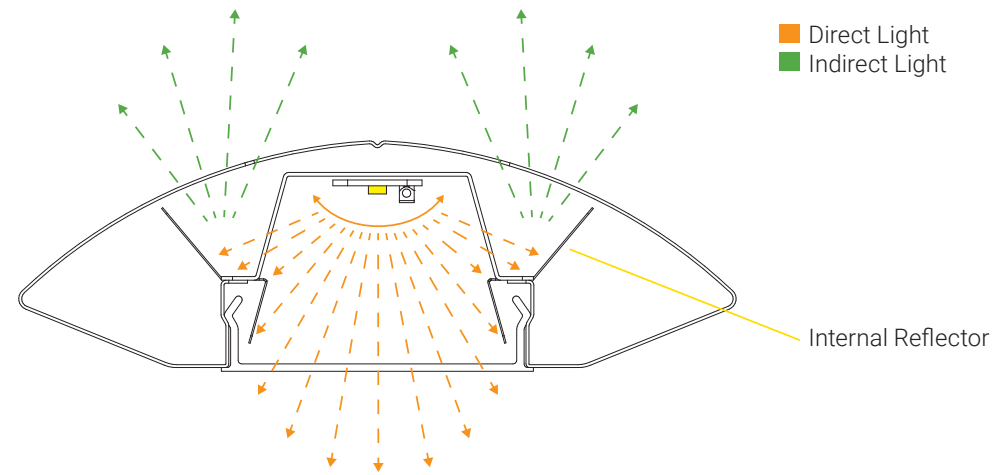
IP 40 **A++**



TECHNICAL NOTE

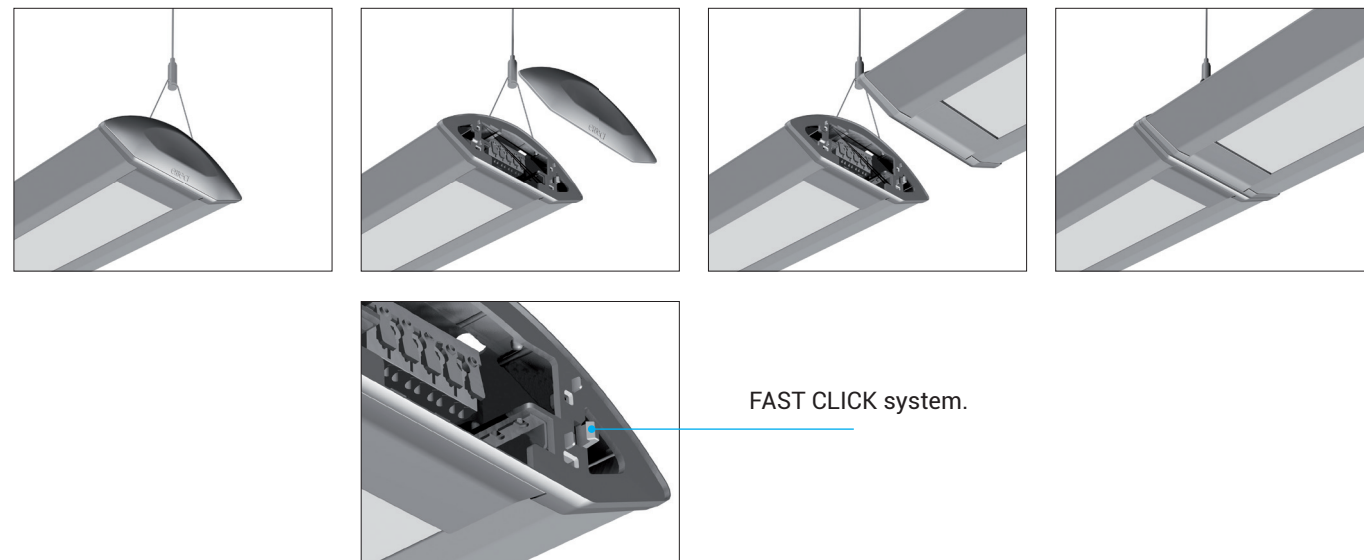
LED VERSIONS DIRECT / INDIRECT EMISSION

The double emission of SMART SYSTEM LED is created from a single LED source for optimum efficiency. The indirect component is achieved by the use dedicated internal reflectors, which reflect a proportion of the LEDs emission upwards and out through satin opal covered linear slots in the luminaire body, gently washing the ceiling above the fitting. This significantly increases the overall efficacy of the product.




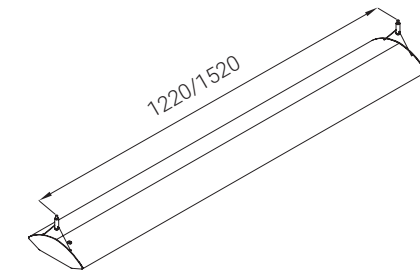
MODULAR SYSTEM

The innovative joint system FAST-CLICK is supplied as standard on all Smart fixtures, allowing quick and easy installation in continuous rows without tools, where two or more luminaires are joined together. This allows freedom during installation without the need to purchase further accessories. With a 5-pole terminal block it is possible manage up to 3 separate control lines.



FIXING DISTANCES

	mm
24W - 48W HP	1220
30W - 60W HP	1520



ACCESSORIES



65AA1330
Single wire suspension kit with clutch operated adjustment mechanism.
Cable length 1500mm.



65AA14
Spacer kit for ceiling mounting.



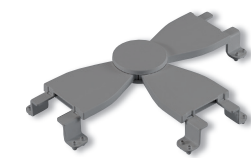
65AA16
Powered supply box cable length 2000mm.



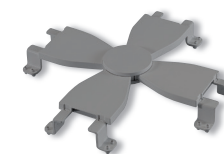
65AA165P
5-pole powered supply box cable length 2000mm.



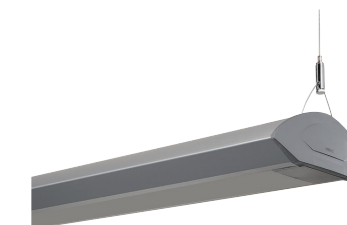
65AA05
2 way cabled adjustable joint.



65AA06
3 way cabled joint.



65AA07
4 way cabled joint.



65AA24: 630mm
65AA28: 1230mm
65AA35: 1530mm
Blind module.