

PCM LED EVO

Design ESSE-CI



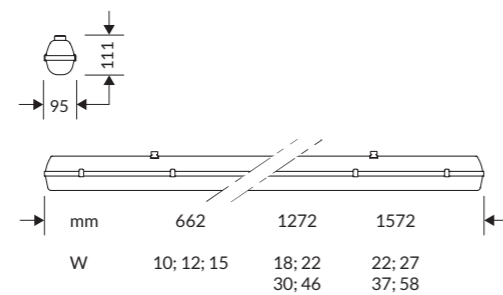
η >129 lm/W

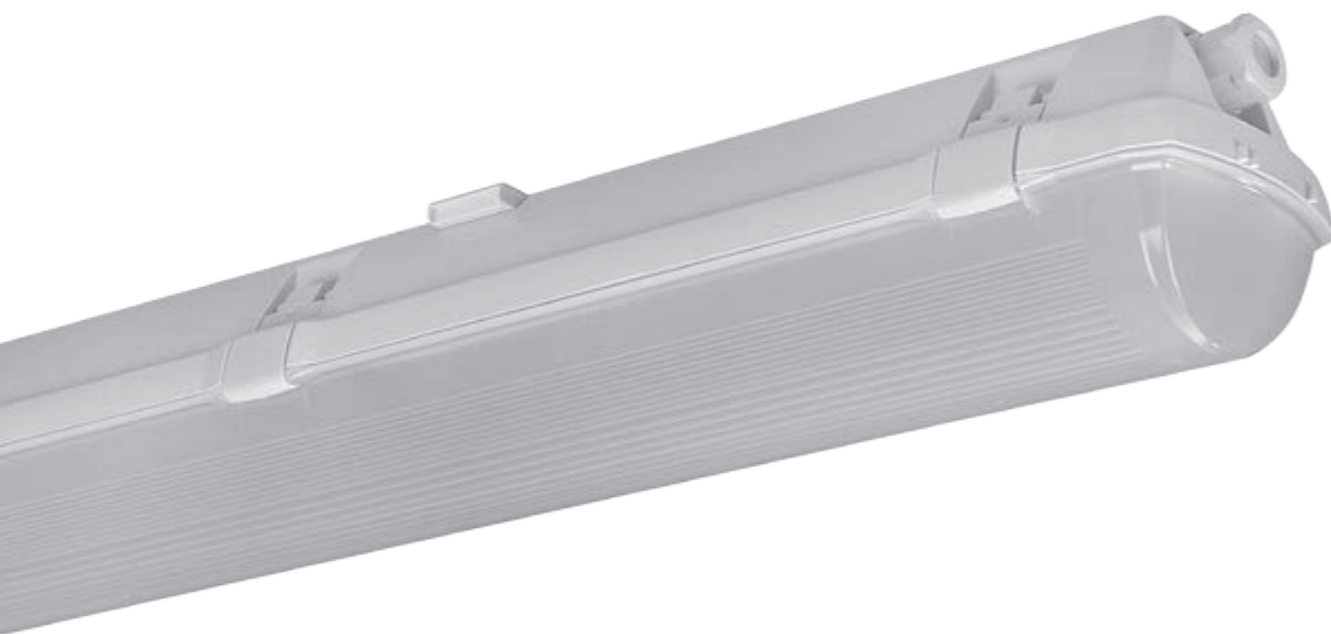
CRI >80

IP 66

UGR <22

IK 10





P C M L E D E V O

IP66 luminaires that combine efficiency and energy saving with a long life time. High impact resistance and high protection against dust and water.

SPECIFICATIONS

- Colour temperature: 4000K
- CRI > 80
- Mac Adams 3
- Life Time: L80/B20 50.000h
- 5 years complete warranty
- Eye safety: risk-free (RG 0) in accordance with EN62471:2009
- Temperature range: -20° / +35°

OPTICS

Translucent polycarbonate screen UV stabilized.
Internal reflector in painted steel sheet UV stabilized.

BODY

Polycarbonate body with high mechanical resistance.

LEGAL REFERENCES

In compliance with the safety standards EN 60 598-1 and UNI EN 12464-1 (lighting for working places).

CERTIFICATIONS

CE IP66

ErP Class: A+

IK10

ON REQUEST

- Wiring with DALI dimmable converter - Code: RDD (verify the version available)
- Wiring with emergency kit - Code: EM for 1 hour / EM3H for 3 hours (verify the version available)
- Steel clips for screen fixing

VERSIONS

PCM LED EVO PC

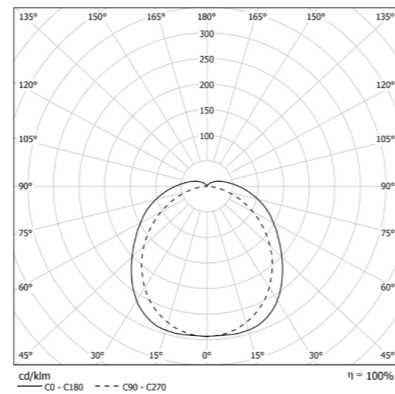
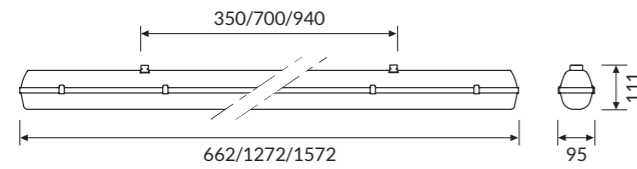
PCM LED EVO PC



OPTIC

Translucent polycarbonate screen UV stabilized.
Internal reflector in painted steel sheet UV stabilized.

IP 66 A+
IK10



COLOUR TEMPERATURE //

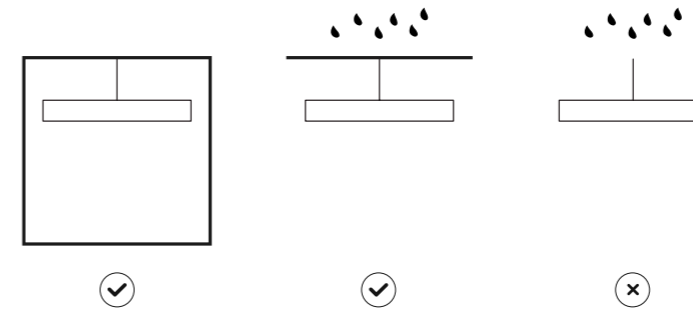
4 0 0 0 K

COD	💡	lm	mm
03PC10L466	10W 4000K IP66	1290	95x662
03PC12L466	12W 4000K IP66	1550	95x662
03PC15L466	15W 4000K IP66	1970	95x662
03PC18L466	18W 4000K IP66	2390	95x1272
03PC22L466	22W 4000K IP66	2940	95x1272
03PC30L466	30W 4000K IP66	4000	95x1272
03PC46L466	46W 4000K IP66	5880	95x1272
03PC22L466L	22W 4000K IP66	2930	95x1572
03PC27L466	27W 4000K IP66	3650	95x1572
03PC37L466	37W 4000K IP66	5040	95x1572
03PC58L466	58W 4000K IP66	7350	95x1572

TECHNICAL NOTE

INDOOR/OUTDOOR INSTALLATION

Not suitable for outdoor applications.
To be installed in indoor or covered outdoor areas.



ACCESSORIES INCLUDED

Brackets for ceiling or wall application
Hanging hook for suspension application

