

/ 3 8 8

# OVVIO DISPLAY LED

Design Serge & Robert Cornelissen

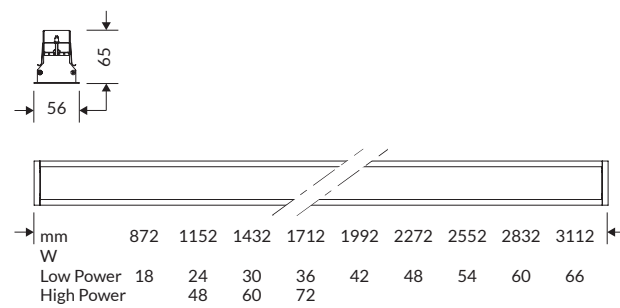


**η** >100 lm/W

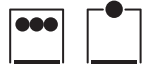
**CRI** >80

**IP** 40

**UGR** <22







/ 3 9 0



# OVVIO DISPLAY LED

Compact body design with minimal ceiling bezel and tight frame (4mm), the luminaire can be recessed into false plasterboard ceilings and walls.

Rapid fixing system and fast electrical connection minimize installation time. High efficiency and high power versions available. Maximum length up to 3 meters with 280mm modularity, with linear joints permitting continuous mounting. Ceiling and ceiling-wall corner modules available.

## SPECIFICATIONS

- 350mA integrated driver
- Colour Temperature: 3000K/4000K
- CRI>80
- McAdams 3
- Life Time: L80/B50 >50.000h
- 5 years complete warranty
- Eye safety: risk-free (RG 0) in accordance with EN62471:2009

## OPTICS

PMMA diffuser for a soft emission without areas of shade.

## BODY

Body in extruded aluminum with epoxy powdered coated.

## LEGAL REFERENCES

In compliance with the safety standards EN 60 598-1 and UNI EN 12464-1 (lighting for working places).

## CERTIFICATIONS

CE IP40  
ErP Class: A++

## COLOURS

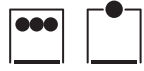
White RAL 9003 - Code: B

## ON REQUEST

- Wiring DALI dimmable - Code: RDD (verify the version available)
- Wiring with emergency kit - Code: EM for 1 hour / EM3H for 3 hours (verify the version available)
- Colour Temperature 5000K
- CRI>90 Premium Version
- Driver Bluetooth - Code: BT (verify the version available)

## VERSIONS

OVVIO DISPLAY LED LOW POWER  
OVVIO DISPLAY LED HIGH POWER  
ACCESSORIES

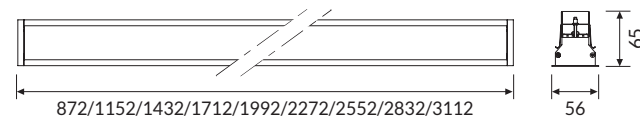


/ 3 9 2

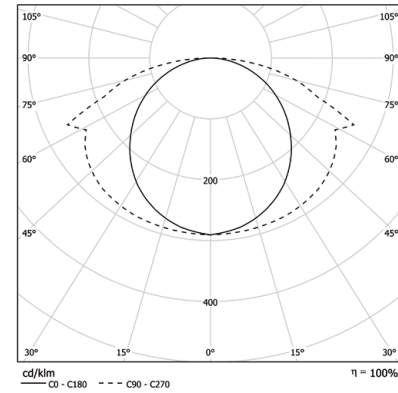
# OVVIO DISPLAY LED LOW POWER

## OPTIC

PMMA diffuser for a soft emission with no shadow evident.



IP 40 A++



Light Bulb Icon	Light Bulb Icon
18W	858 mm
24W	1138 mm
30W	1418 mm
36W	1698 mm
42W	1986 mm

## COLOUR TEMPERATURE //

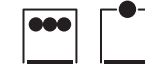
### 4 0 0 0 K

COD	Light Bulb Icon	lm	mm
40PG18L4	18W 4000K	1813	872
40PG24L4	24W 4000K	2417	1152
40PG30L4	30W 4000K	3021	1432
40PG36L4	36W 4000K	3625	1712
40PG42L4	42W 4000K	4229	1992
40PG48L4	48W 4000K	4834	2272
40PG54L4	54W 4000K	5438	2552
40PG60L4	60W 4000K	6042	2832
40PG66L4	66W 4000K	6646	3112

### 3 0 0 0 K

COD	Light Bulb Icon	lm	mm
40PG18L3	18W 3000K	1774	872
40PG24L3	24W 3000K	2366	1152
40PG30L3	30W 3000K	2957	1432
40PG36L3	36W 3000K	3549	1712
40PG42L3	42W 3000K	4140	1992
40PG48L3	48W 3000K	4732	2272
40PG54L3	54W 3000K	5323	2552
40PG60L3	60W 3000K	5915	2832
40PG66L3	66W 3000K	6506	3112

\* Both for single installation and continuous rows add 4mm at the cutout for the end cap kit.

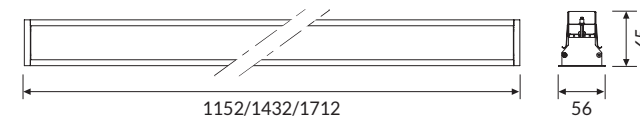


3 9 3 /

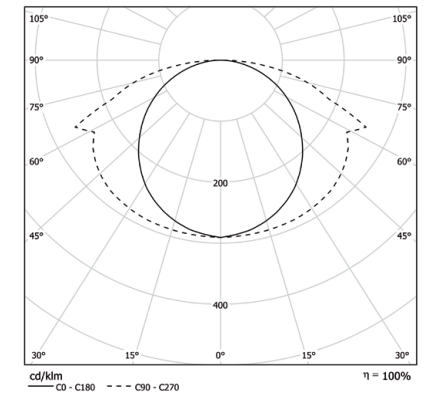
# OVVIO DISPLAY LED HIGH POWER

## OPTIC

PMMA diffuser for a soft emission with no shadow evident.



IP 40 A++



Light Bulb Icon	Light Bulb Icon
48W	1138 mm
60W	1418 mm
72W	1698 mm

\* Both for single installation and continuous rows add 4mm at the cutout for the end cap kit.

## COLOUR TEMPERATURE //

### 4 0 0 0 K

COD	Light Bulb Icon	lm	mm
40PG48L4HP	48W 4000K	4834	1152
40PG60L4HP	60W 4000K	6042	1432
40PG72L4HP	72W 4000K	7250	1712

### 3 0 0 0 K

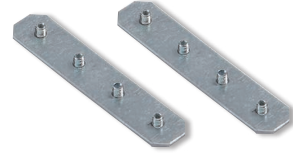
COD	Light Bulb Icon	lm	mm
40PG48L3HP	48W 3000K	4732	1152
40PG60L3HP	60W 3000K	5915	1432
40PG72L3HP	72W 3000K	7098	1712

## ACCESSORIES



40AA09LED

End caps kit.



40AA11LED

Linear joint.



SCOV510000

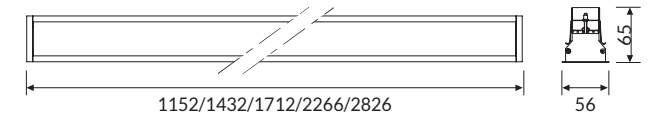
PG metacrilate diffuser, 10m coil to be measured and cut on site to provide continuous gap-free light diffusion.



## OVVIO DISPLAY LED HCL

## OPTIC

PMMA diffuser for a soft emission with no shadow evident.



IP 40 **A++**

## VERSION //

## PG

COD	💡	lm	mm
40PG48HCL	48W	3780	1152
40PG60HCL	60W	4725	1432
40PG72HCL	72W	5670	1712
40PG96HCL	96W	7560	2266
40PG120HCL	120W	9450	2826

## SPECIFICATIONS

- Colour temperature range from 2700K to 6500K
- DALI DT8 Driver
- Controllable with N/A button or DIMKITHCL management system (see page 582)

