

LINEA IP54

ID CODE: 12

Apparecchi IP54 che coniugano **efficienza e risparmio energetico** con un lungo life time. Ideali per laboratori, aree di passaggio e ambienti industriali.









Design
esse-ci


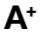

CARATTERISTICHE

-  Emissione diretta
-  UGR <22
-  IP 54
-  IK 10
-  -25° / +35°




LED

-  3000K/4000K
-  >98 lm/W; >103 lm/W
-  CRI >90
-  Sicurezza occhi: RG0/RG1
-  Mac Adams 3
-  L80/B10 >50.000h

CERTIFICAZIONI

-  CE
-  A+
-  5 anni di garanzia

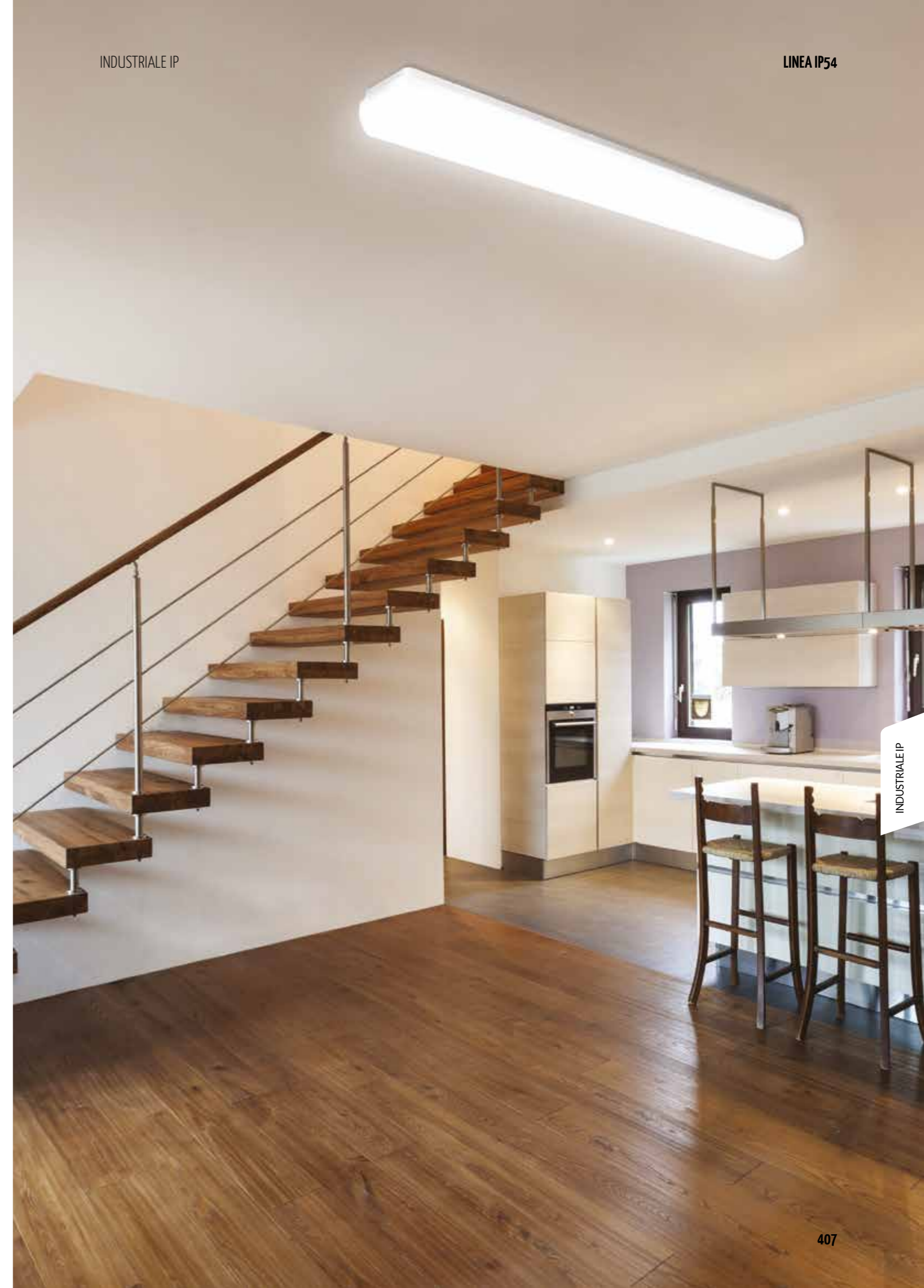
A RICHIESTA

-  DALI - codice RDD (verificare disponibilità)
-  Emergenza 1/3 ore - codice EM/EM 3h
-  5000K - 6500K

Specifiche Driver integrato.

Ottiche Diffusore in policarbonato, resistente agli urti.

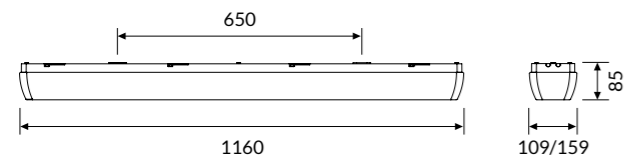
Corpo Corpo in policarbonato con elevata resistenza meccanica, guarnizione di tenuta in poliuretano espanso (PUR).



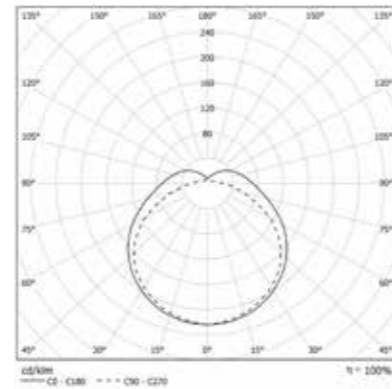
LINEA IP54 LONG

OTTICA

Diffusore in policarbonato, resistente agli urti.



IP 54 A+
IK10



TEMPERATURA COLORE

4000K

COD	💡	lm	mm
12PO21L49054	21W	2130	109x1160
12PO25L49054	25W	2716	109x1160
12PO33L49054	33W	3506	109x1160
12PO39L49054	39W	3971	159x1160
12PO48L49054	48W	4948	159x1160
12PO65L49054	65W	6705	159x1160

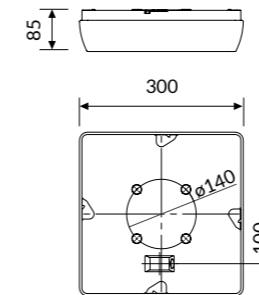
3000K

COD	💡	lm	mm
12PO21L39054	21W	1894	109x1160
12PO25L39054	25W	2255	109x1160
12PO33L39054	33W	2977	109x1160
12PO39L39054	39W	3518	159x1160
12PO48L39054	48W	4330	159x1160
12PO65L39054	65W	5864	159x1160

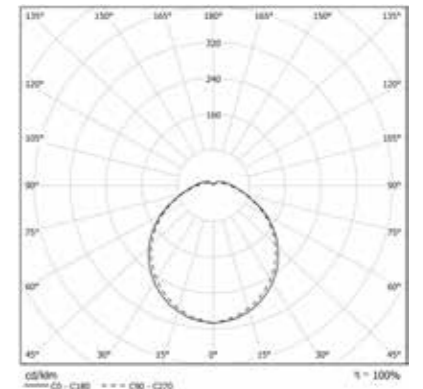
LINEA IP54 SQUARE

OTTICA

Diffusore in policarbonato, resistente agli urti.



IP 54 A+
IK10



TEMPERATURA COLORE

4000K

COD	💡	lm	mm
12PO10L49054	10W	1097	300x300
12PO13L49054	13W	1386	300x300
12PO18L49054	18W	1879	300x300
12PO27L49054	27W	2688	300x300

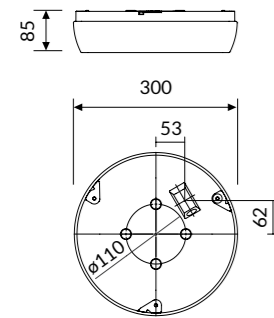
3000K

COD	💡	lm	mm
12PO10L39054	10W	893	300x300
12PO13L39054	13W	1161	300x300
12PO18L39054	18W	1607	300x300
12PO27L39054	27W	2411	300x300

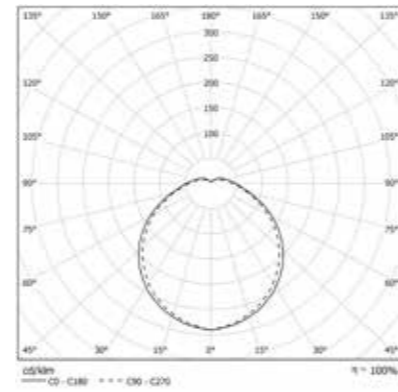
LINEA IP54 ROUND

OTTICA

Diffusore in policarbonato, resistente agli urti.



IP 54 A+
IK10



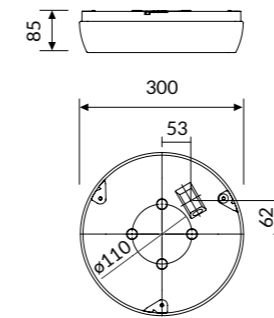
TEMPERATURA COLORE 4000K			
COD	💡	lm	Ø (mm)
12PO10L49054R	10W	1116	300
12PO13L49054R	13W	1395	300
12PO18L49054R	18W	1897	300
12PO27L49054R	27W	2725	300

TEMPERATURA COLORE 3000K			
COD	💡	lm	Ø (mm)
12PO10L39054R	10W	911	300
12PO13L39054R	13W	1185	300
12PO18L39054R	18W	1641	300
12PO27L39054R	27W	2461	300

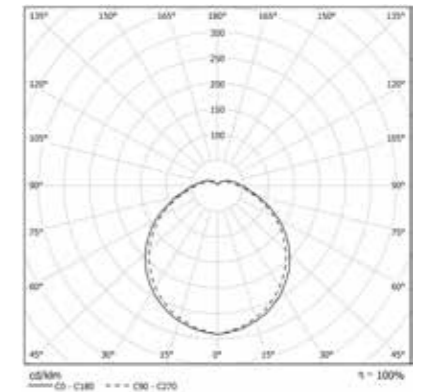
LINEA IP54 ROUND INTELLIGENT

OTTICA

Diffusore in policarbonato, resistente agli urti.
Sensore di presenza integrato.



IP 54 A+
IK10

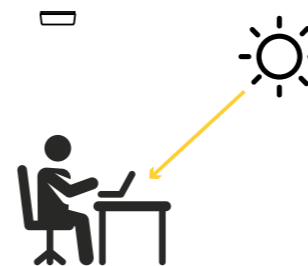


TEMPERATURA COLORE 4000K			
COD	💡	lm	Ø (mm)
12PO10L49054RS	10W	1116	300
12PO13L49054RS	13W	1395	300

TEMPERATURA COLORE 3000K			
COD	💡	lm	Ø (mm)
12PO10L39054RS	10W	911	300
12PO13L39054RS	13W	1185	300

Note Tecniche

SENSORE DI PRESENZA - LUCE COSTANTE



Con sufficiente luce naturale, la luce non si accende anche se viene rilevata presenza. Livello di luce settabile manualmente.



Con scarsa luce naturale, il sensore accende la luce quando viene rilevata presenza.



La luce si spegne automaticamente quando non viene rilevato alcun movimento. Tempo di attesa settabile manualmente.