

CL LED

CE IP40

// Istruzioni per il montaggio // Assembly instructions

// **Avvertenze.** La sicurezza dell'apparecchio è garantita solamente con l'uso appropriato delle presenti istruzioni che devono essere lette e conservate. • Togliere tensione di rete prima della sostituzione delle lampade e comunque prima di ogni operazione di manutenzione. • Non coprire l'apparecchio con panni o con quant'altro possa causare un eccessivo surriscaldamento. • La nostra azienda declina ogni responsabilità per danni causati da uno scorretto utilizzo o dalla manomissione dell'apparecchio stesso. • Per la sostituzione di componenti usurati rivolgersi a personale qualificato. • L'apparecchio non deve essere smaltito come rifiuto urbano. Deve essere soggetto a raccolta separata per evitare danni all'ambiente nel rispetto della direttiva 2002/96 e delle leggi nazionali per lo smaltimento del prodotto a fine vita. Il mancato rispetto di quanto sopra è sanzionato dalla Legge. • Si prega di informarsi in merito al sistema locale di raccolta differenziata per i prodotti elettrici ed elettronici. Apparecchio per uso solo in ambienti interni. Qualora il cavo flessibile fosse danneggiato, dovrà essere sostituito esclusivamente dal produttore mediante un suo incaricato oppure da un tecnico qualificato.

// **Warning.** The safety of the fixture is guaranteed only under the correct use of the present instructions, which have to be read and kept. • Turn off the net voltage before the replacement of the lamp and however before any maintenance action. • Do not cover the fixture with clothes or something else which could cause an excessive overheating. • Our company declines all responsibility for damages caused by an incorrect use or by the tampering of fixture itself. • For replacement of worn out components please address to the skilled staff. • The fixture could not be disposed as urban waste. It must be subject to separate waste collection to avoid environmental damage in compliance with directive 2002/96 and national laws for the disposal of product at the end of its working life. The non-compliance of the above mentioned directive will be sanctioned by Law. • We ask you to kindly get information about local separate waste collection system for electric and electronic products. For indoor use only. If the external flexible cable is damaged it shall be replaced exclusively by the manufacturer by his service agent or by a qualified technicians.

ISCLL

esse-ci  
LIVING LIGHT

ESSE-CI s.r.l.

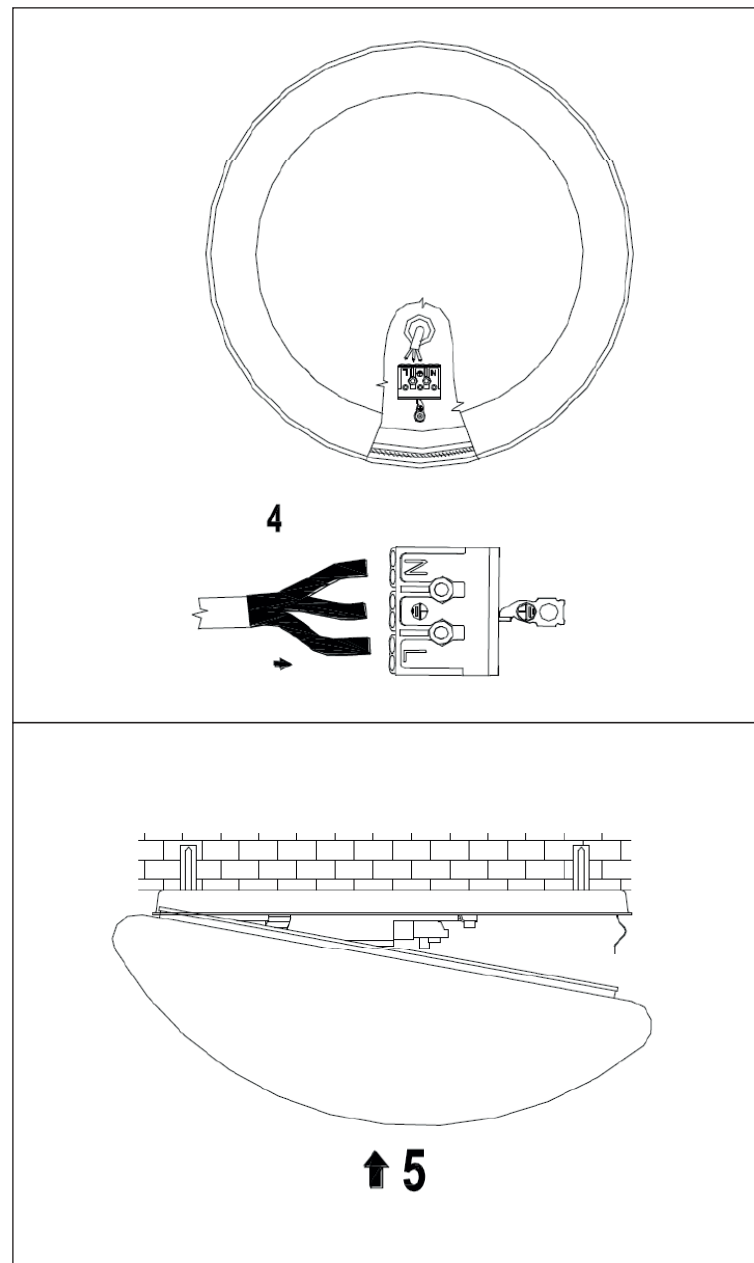
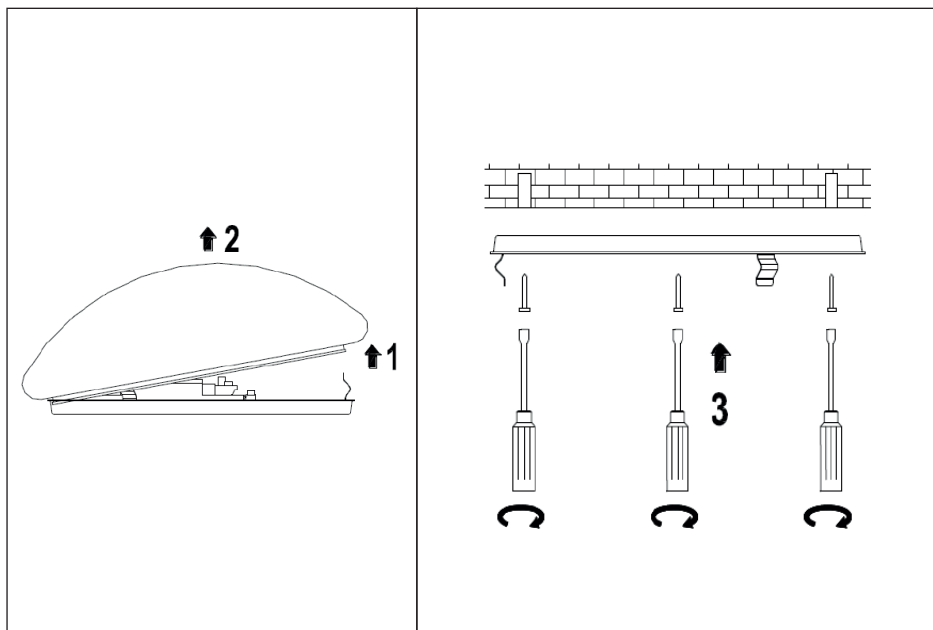
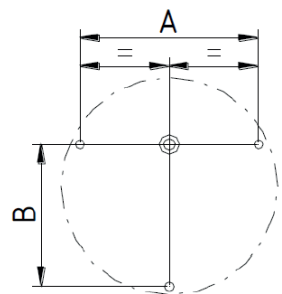
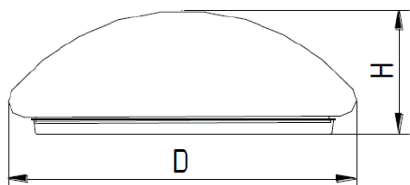
Viale del Lavoro 25, 35010 Vigonza (PD) Italy  
T. +39 049 8959511 // info@esse-ci.it  
esse-ci.it



Attenzione: prima di procedere con ciascuna delle seguenti operazioni, togliere la tensione di rete ed utilizzare i dispositivi di protezione individuale (guanti, occhiali, scarpe)

Attention: before proceeding with each of the following operations, switch off the power supply at the consumer unit. Use personal protective equipment.

CL LED	A/B mm	D mm	H mm
15W	208/180	300	105
26W	272/232	375	125
37W	360/312	480	150

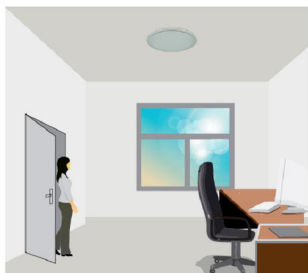


## Settaggio sensore/Sensor setting

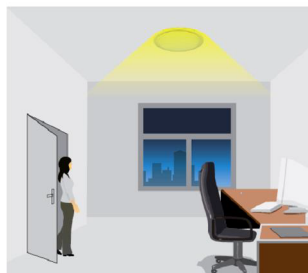
### Function and Options

#### 1 On-off Function

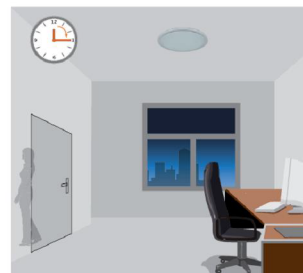
This sensor is a motion switch, which turns on the light on detection of people movement, and turns off after a pre-selected holdtime when there is no people around. A daylight sensor is also built-in to switch off the light when there is sufficient natural light.



With sufficient natural light, the light does not switch on when presence detected.

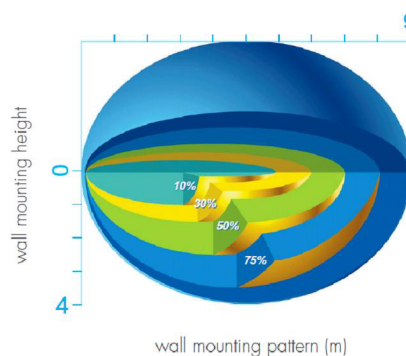
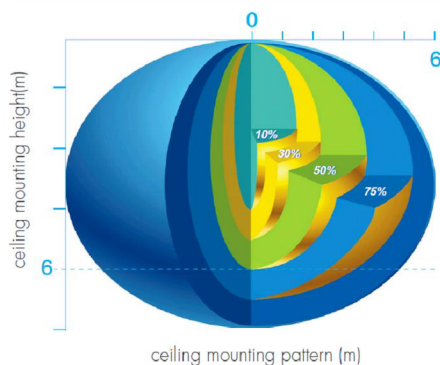


With insufficient natural light, the sensor switches on the light automatically when person enters the room.



After the hold time, then switch off automatically when no movement is detected.

### Detection Pattern



### Settings

#### 1 Detection area

Detection area can be reduced by selecting the combination on the DIP switches to fit precisely for each specific application.

	1	2	3	
I	●	●	●	100%
II	○	●	●	75%
III	○	●	○	50%
IV	○	○	●	30%
V	○	○	○	10%

- I – Detection range 100%
- II – Detection range 75%
- III – Detection range 50%
- IV – Detection range 30%
- V – Detection range 10%

#### 2 Hold-time

Hold-time means the time period you would like to keep the lamp on 100% after the person has left the detection area.

	1	2	3	
I	●	●	●	5s
II	○	●	●	30s
III	○	○	●	1min
IV	○	●	○	5min
V	○	○	●	10min
VI	○	○	○	20min
VII	○	○	○	30min

- I – 5s
- II – 30s
- III – 1minute
- IV – 5minutes
- V – 10minutes
- VI – 20minutes
- VII – 30minutes

#### 3 Daylight sensor

The daylight threshold can be set on DIP switches, to fit for particular application.

"Daylight" : The lamp works always, even during daylight.

"Twilight" : The lamp works only in twilight .

"Darkness" : The lamp works only in darkness.

	1	2	3	
I	●	●	●	Disable
II	○	●	●	50 Lux
III	○	○	●	20 Lux
IV	○	○	○	5 Lux
V	○	○	○	2 Lux

- I – Disable
- II – 50 Lux
- III – 20 Lux
- IV – 5 Lux
- V – 2 Lux