

## ACCESSORIES



Cover for track  
electrification element  
102x45 mm.

**63AA09CEL**



Cover end cap.

**63AA09**



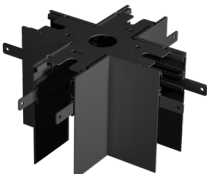
2-way joint  
(size 97x97 mm).

**63AA05C**



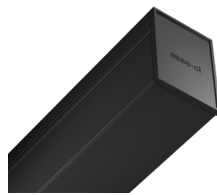
3-way joint  
(size 97x148 mm).

**63AA06C**



4-way joint  
(size 148x148 mm).

**63AA07C**



Blind module.

**63MC1M:** 1000mm  
**63MC2M:** 2000mm



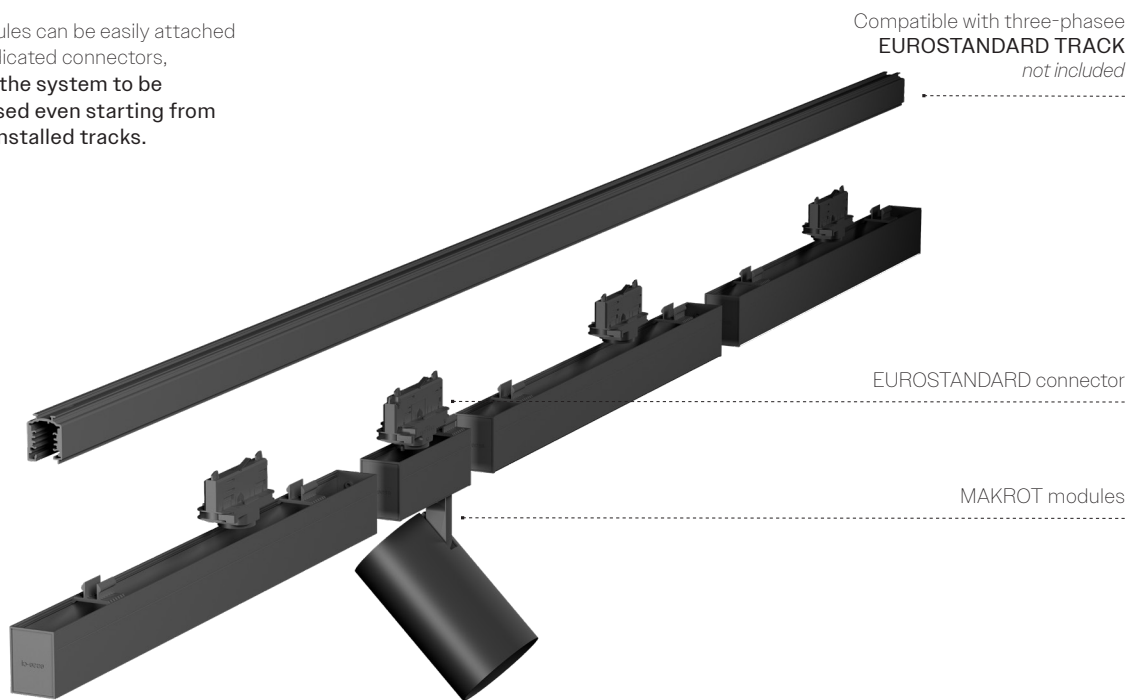
Indirect light module with 230V LED  
strip, 15 W/m, cuttable every 10 cm.

**63AAK4IN500:** 500mm  
**63AAK4IN1000:** 1000mm  
**63AAK3IN500:** 500mm  
**63AAK3IN1000:** 1000mm

# MAKROT

MAKROT offers full freedom of modular customisation, directly integrated into EUROSTANDARD three-phase electrified tracks.

The modules can be easily attached using dedicated connectors, **allowing the system to be customised even starting from already installed tracks.**



## A FEW SIMPLE STEPS

### 1. Check for the presence of EUROSTANDARD three-phase electrified tracks

The Makrot system is compatible with standard three-phase tracks. For different track types, dedicated connectors and mounting systems can be requested.

### 2. Select the lighting modules according to the desired effect

Choose between modules for general lighting (CLD, PG) and modules for accent lighting (Fly Eyes), freely combinable on the same track.

### 3. Define the number and position of the modules to be installed

Multiple modules can be installed along a single track, attached via dedicated connectors, precisely defining the overall lighting effect..

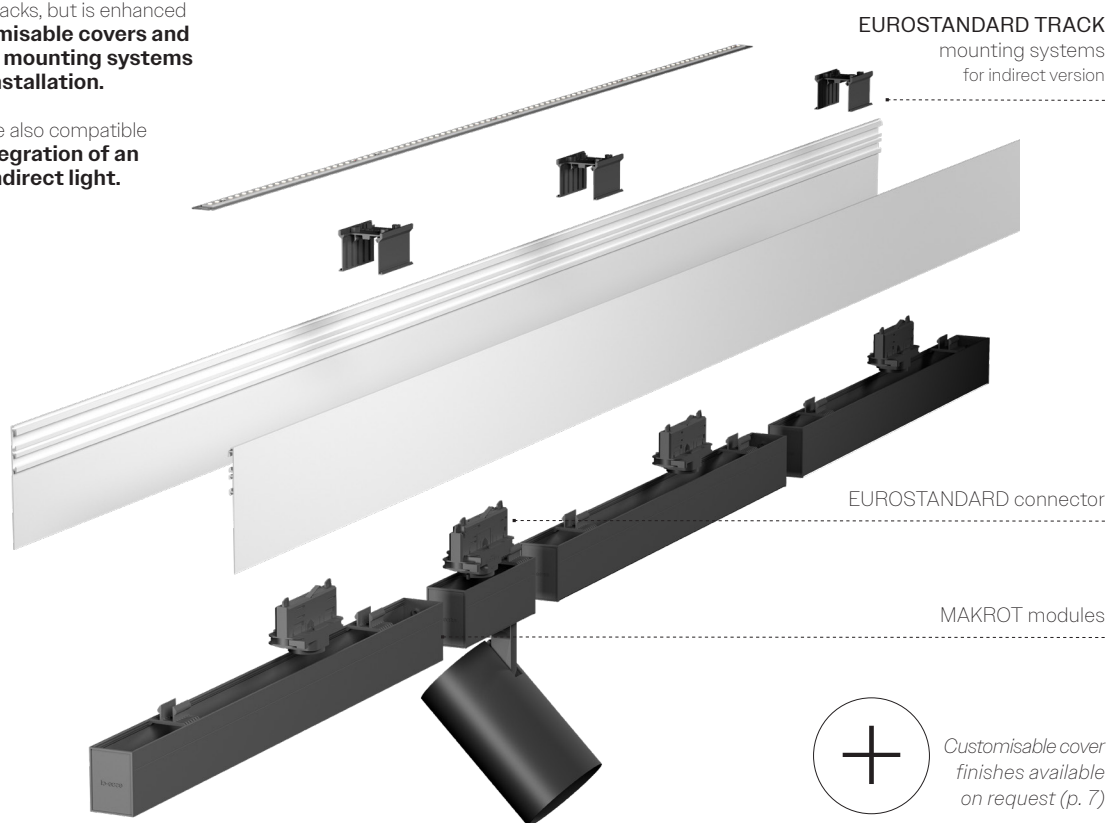
### 4. Choose the luminous flux and optical features of the modules

Each module is available in different wattages, beam angles, and colour temperatures.

# MAKROT\_PRO

MAKROT PRO expands the customisation possibilities of the MAKROT system: the modular structure remains integrated into EUROSTANDARD three-phase electrified tracks, but is enhanced with **customisable covers and dedicated mounting systems for their installation.**

The clips are also compatible with the **integration of an optional indirect light.**



## EXAMPLE – MAKROT PRO INDIRECT LIGHT

The clips supplied with the covers of the Makrot Pro system, customisable in colour, are already designed to accommodate a LED strip for indirect light (code **63AxxINyyy\_**).

