



/ 176

GROOVE

177

GROOVE

Design ESSE-CI



η >110 lm/W

CRI >80

IP 40

UGR <19

	88	87		88	87						
mm	1133	1413	1693	1973	2253	2533	2813	3093	162	262	362
W									1x13	2x13	3x13
Low Power	24	30	36	42	48	54	60	66			
Low Power Double emis.	30	36	48	54	72	78	84	90			
High Power	45	57	68								
High Power Double emis.	51	63	80								



GROOVE

GROOVE is a competitive and versatile profile suitable for recessed, surface and suspended mounting. Produced from painted extruded aluminium in a wide range of lengths and fitted with the latest LED technology for direct or bi-directional light distribution. With its choice of optics, GROOVE is a perfect high performance ambient lighting solution for commercial applications, but with the additional of powerful yet discrete adjustable accent spotlights, it is also at home for retail and educational applications too.

A wide range of accessories are available, making GROOVE an extremely flexible design tool for architects and lighting designers.

SPECIFICATIONS

- 350mA integrated Driver
- Colour temperature: 3000K/4000K
- CRI>80
- Mac Adams 3
- Life Time: L80/B50 >50.000h
- 5 years complete warranty
- Eye safety: risk-free (RG 0) in accordance with EN62471:2009

OPTICS

DPL technology diffuser, UGR<19, for environments with display screen equipment
 Suspended version with double emission: direct / indirect.
 SPOT modules with internal aluminum reflectors with 2 different emissions: 20° - 50°

BODY

Aluminum extruded body with epoxy powder coating.

LEGAL REFERENCES

In compliance with the safety standards EN 60 598-1 and UNI EN 12464-1 (lighting for working places).

CERTIFICATIONS

CE IP40
 ErP Class: A++ - A*



COLOURS

White RAL 9003 - Code: B
 Black RAL 9005 - Code: C8

ON REQUEST

- Wiring DALI dimmable - Code: RDD
- Wiring with emergency kit - Code: EM for 1 hour / EM3H for 3 hours
- Colour Temperature 5000K
- CRI>90 Premium Version
- Driver Bluetooth - Code: BT (verify the version available)

VERSIONS

- | | |
|----------------------------------|-----------------------------------|
| GROOVE LOW POWER | GROOVE HIGH POWER DOUBLE EMISSION |
| GROOVE LOW POWER DOUBLE EMISSION | GROOVE SPOT |
| GROOVE HIGH POWER | ACCESSORIES |



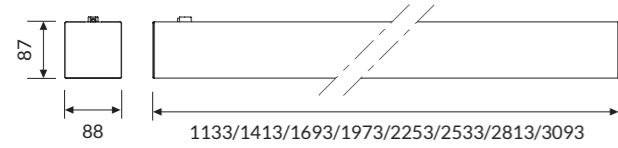
/ 180

GROOVE LOW POWER

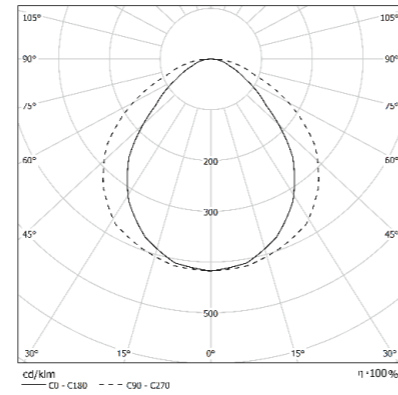


OPTIC

Direct emission with DPL technology diffuser (UGR<19).



IP 40 A++



COLOUR TEMPERATURE //

4000 K

COD	💡	lm	mm
43DR24DPLL4	24W 4000K	2468	1133
43DR30DPLL4	30W 4000K	3085	1413
43DR36DPLL4	36W 4000K	3702	1693
43DR42DPLL4	42W 4000K	4318	1973
43DR48DPLL4	48W 4000K	4935	2253
43DR54DPLL4	54W 4000K	5552	2533
43DR60DPLL4	60W 4000K	6169	2813
43DR66DPLL4	66W 4000K	6786	3093

3000 K

COD	💡	lm	mm
43DR24DPLL3	24W 3000K	2391	1133
43DR30DPLL3	30W 3000K	2989	1413
43DR36DPLL3	36W 3000K	3587	1693
43DR42DPLL3	42W 3000K	4185	1973
43DR48DPLL3	48W 3000K	4783	2253
43DR54DPLL3	54W 3000K	5381	2533
43DR60DPLL3	60W 3000K	5978	2813
43DR66DPLL3	66W 3000K	6576	3093



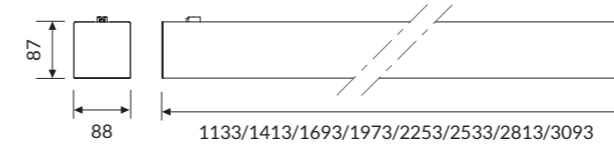
181 /

GROOVE LOW POWER Biemissione

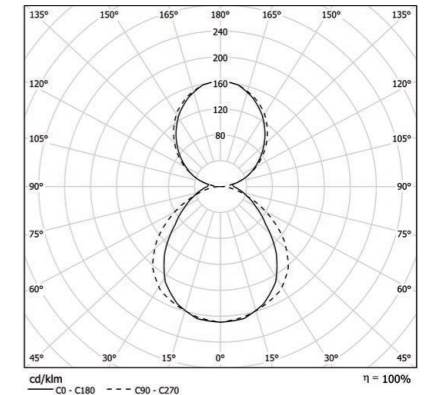


OPTIC

Direct / indirect emission with DPL technology diffuser (UGR<19).



IP 40 A++



DIRECT // INDIRECT EMISSION

mm	Power Direct Mod.	Power Indirect Mod.
1133	24W	6W
1413	30W	6W
1693	36W	12W
1973	42W	12W

mm	Power Direct Mod.	Power Indirect Mod.
2253	48W	24W
2533	54W	24W
2813	60W	24W
3093	66W	24W

COLOUR TEMPERATURE //

4000 K

COD	💡	lm	mm
43DI30DPLL4	30W 4000K	3021	1133
43DI36DPLL4	36W 4000K	3625	1413
43DI48DPLL4	48W 4000K	4834	1693
43DI54DPLL4	54W 4000K	5438	1973
43DI72DPLL4	72W 4000K	7250	2253
43DI78DPLL4	78W 4000K	7855	2533
43DI84DPLL4	84W 4000K	8459	2813
43DI90DPLL4	90W 4000K	9063	3093

3000 K

COD	💡	lm	mm
43DI30DPLL3	30W 3000K	2989	1133
43DI36DPLL3	36W 3000K	3587	1413
43DI48DPLL3	48W 3000K	4783	1693
43DI54DPLL3	54W 3000K	5381	1973
43DI72DPLL3	72W 3000K	7174	2253
43DI78DPLL3	78W 3000K	7772	2533
43DI84DPLL3	84W 3000K	8370	2813
43DI90DPLL3	90W 3000K	9366	3093



/ 1 8 2

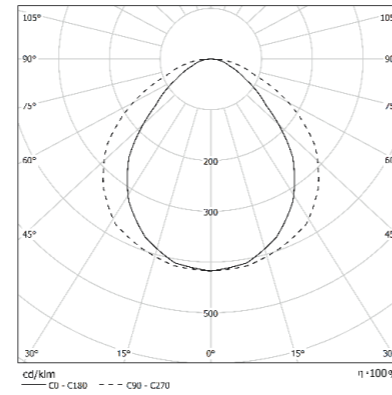
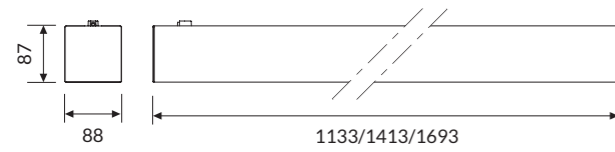
GROOVE HIGH POWER



OPTIC

Direct emission with DPL technology diffuser (UGR<19).

IP 40 A++



COLOUR TEMPERATURE //

4 0 0 0 K

COD		lm	mm
43DR45DPLL4HP	45W 4000K	4986	1133
43DR57DPLL4HP	57W 4000K	6233	1413
43DR68DPLL4HP	68W 4000K	7064	1693

3 0 0 0 K

COD		lm	mm
43DR45DPLL3HP	45W 3000K	4722	1133
43DR57DPLL3HP	57W 3000K	5932	1413
43DR68DPLL3HP	68W 3000K	6690	1693



1 8 3 /

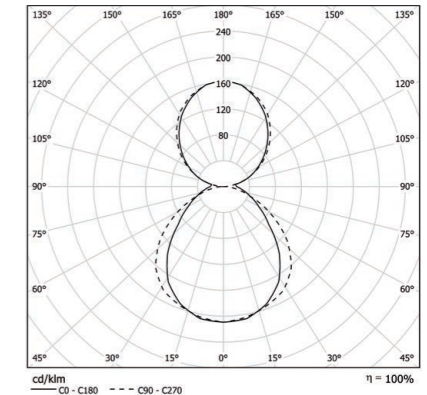
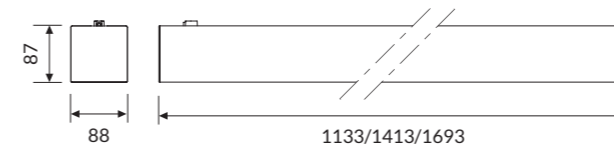
GROOVE HIGH POWER Biemissione



OPTIC

Direct / indirect emission with DPL technology diffuser (UGR<19).

IP 40 A++



DIRECT // INDIRECT EMISSION

mm	Power Direct Mod.	Power Indirect Mod.
1133	45W	6W
1413	57W	6W
1693	68W	12W

COLOUR TEMPERATURE //

4 0 0 0 K

COD		lm	mm
43DI51DPLL4HP	51W 4000K	5514	1133
43DI63DPLL4HP	63W 4000K	6812	1413
43DI80DPLL4HP	80W 4000K	8650	1693

3 0 0 0 K

COD		lm	mm
43DI51DPLL3HP	51W 3000K	5244	1133
43DI63DPLL3HP	63W 3000K	6478	1413
43DI80DPLL3HP	80W 3000K	8226	1693



/ 1 8 4

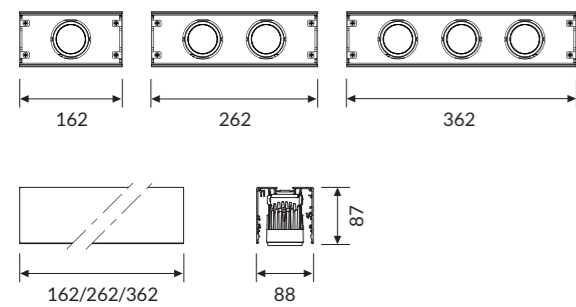
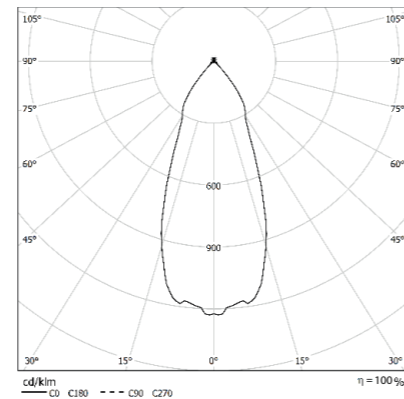
GROOVE SPOT



OPTIC

Anodized aluminum reflectors to be ordered separately.

IP 40 A*



* Not for single installation.

COLOUR TEMPERATURE //

4 0 0 0 K

COD	Light Bulb Icon	lm
43AA113L4	1x13W 4000K	1x1196
43AA213L4	2x13W 4000K	2x1196
43AA313L4	3x13W 4000K	3x1196

3 0 0 0 K

COD	Light Bulb Icon	lm
43AA113L3	1x13W 3000K	1x1064
43AA213L3	2x13W 3000K	2x1064
43AA313L3	3x13W 3000K	3x1064

ACCESSORIES



43AA13

Single wire 1500mm long adjustable suspension kit.



43AA1330

Single wire 3000mm long adjustable suspension kit.



43AA16

3 poles-ceiling rose power cable. Cable length 2000mm.



43AA165P

5 poles-ceiling rose power cable. Cable length 2000mm.



43AA09

End caps kit.



43MC1000: 1000mm
43MC2000: 2000mm

Blind module.



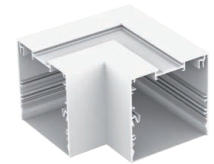
43AA11

Linear joint.



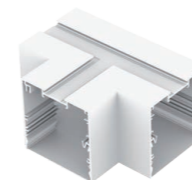
43DR12L4A90: 12W(LP) 4000K
43DR12L3A90: 12W(LP) 3000K
43DR24L4A90: 24W(HP) 4000K
43DR24L3A90: 24W(HP) 3000K

2 ways luminous joint 90°.



43AA05

2 ways joint.



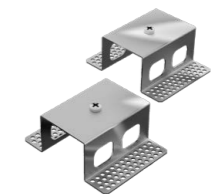
43AA06

3 ways joint.



43AA07

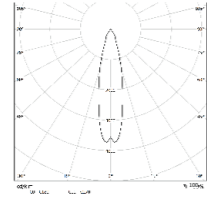
4 ways joint.



43AA17

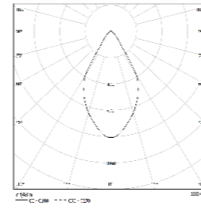
Brackets kit for recessed installation.

GROOVE SPOT REFLECTORS



43AARF20COB

Reflector GROOVE 20°.



43AARF50COB

Reflector GROOVE 50°.



GROOVE HCL

GROOVE SPOT OPTICS



43AAND

Honeycomb lens optic.



43AASL

Sculpture lens optic.

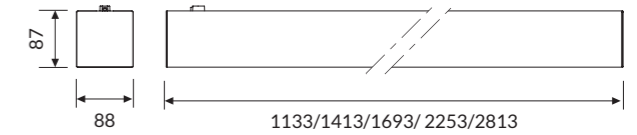


43AAMG

Mat Glass lens optic.

OPTIC

Direct emission with DPL technology diffuser (UGR<19).



IP 40 A++

VERSION //

D P L

COD	💡	lm	mm
43DR48DPLHCL	48W	3840	1133
43DR60DPLHCL	60W	4800	1413
43DR72DPLHCL	72W	5760	1693
43DR96DPLHCL	96W	7680	2253
43DR120DPLHCL	120W	9600	2813

SPECIFICATIONS

- Colour temperature range from 2700K to 6500K
- DALI DT8 Driver
- Controllable with N/A button or DIMKITHCL management system (see page 582)

