

GROOVE IP54

Design ESSE-CI

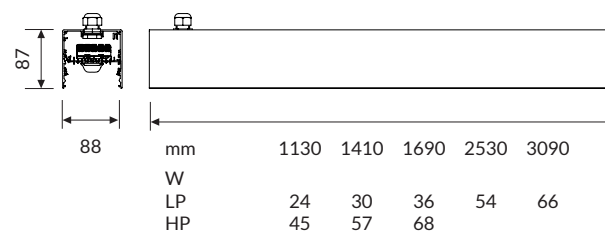


η >110 lm/W

CRI >80

IP 54

UGR <22





GROOVE IP54

GROOVE IP54 combines the advantages of continuous row luminaires with the IP requirements of industrial or commercial environments.

The aluminum body and the flexible diffuser with coextruded gaskets, guarantee maximum performance and protection against dust and splashes of water.

SPECIFICATIONS

- 350mA integrated Driver
- Colour temperature: 3000K/4000K
- CRI>80
- Mac Adams 3
- Life Time: L80/B50 >50.000h
- 5 years complete warranty
- Eye safety: risk-free (RG 0) in accordance with EN62471:2009

OPTICS

PG diffuser for soft diffusion with UGR<22

BODY

Aluminum extruded body with epoxy powder coating.

LEGAL REFERENCES

In compliance with the safety standards EN 60 598-1 and UNI EN 12464-1 (lighting for working places).

CERTIFICATIONS

CE IP54

ErP Class: A++ - A+

COLOURS

White RAL 9003 - Code: B

Black RAL 9005 - Code: C8

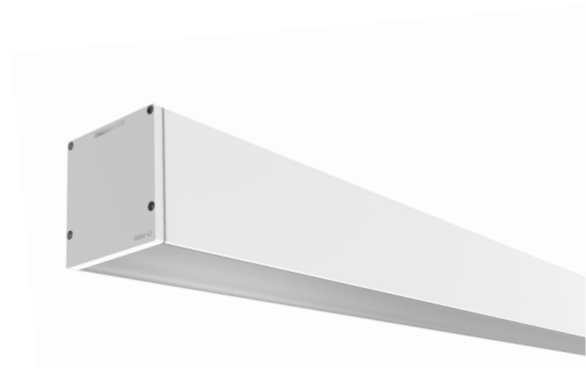
ON REQUEST

- Wiring DALI dimmable - Code: RDD
- Wiring with emergency kit - Code: EM for 1 hour / EM3H for 3 hours
- Colour Temperature 5000K
- CRI>90 Premium Version
- Driver Bluetooth - Code: BT (verify the version available)

VERSIONS

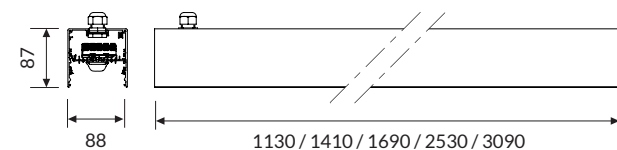
GROOVE IP54 LOW POWER
GROOVE IP54 HIGH POWER
ACCESSORIES

GROOVE IP54 LOW POWER

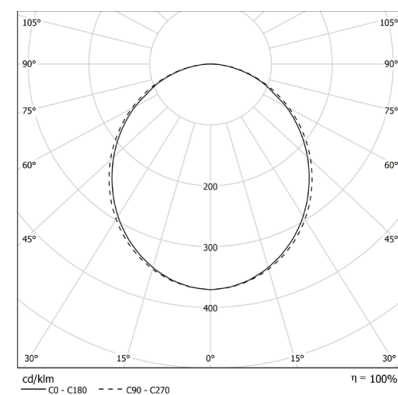


OPTIC

Methacrylate satin antistatic diffuser screen, UGR<22 to be ordered separately (see accessories page 200).



IP 54 A++



* For single installation, add 15mm at the profile length for the end cap kit.

* For continuous rows, add to the sum of the profile lengths $1,5mm \cdot (n^{\circ} \text{ fixture} - 1)$ for the gasket and 15mm for the end cap kit.

COLOUR TEMPERATURE //

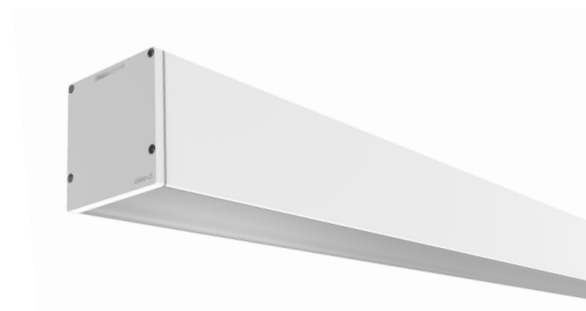
4 0 0 0 K

COD	💡	lm	mm
43AA24L454	24W 4000K	2468	1130
43AA30L454	30W 4000K	3085	1410
43AA36L454	36W 4000K	3702	1690
43AA54L454	54W 4000K	5552	2530
43AA66L454	66W 4000K	6786	3090

3 0 0 0 K

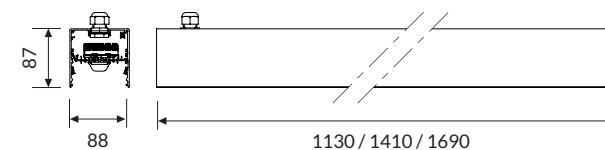
COD	💡	lm	mm
43AA24L354	24W 3000K	2391	1130
43AA30L354	30W 3000K	2989	1410
43AA36L354	36W 3000K	3587	1690
43AA54L354	54W 3000K	5381	2530
43AA66L354	66W 3000K	6576	3090

GROOVE IP54 HIGH POWER

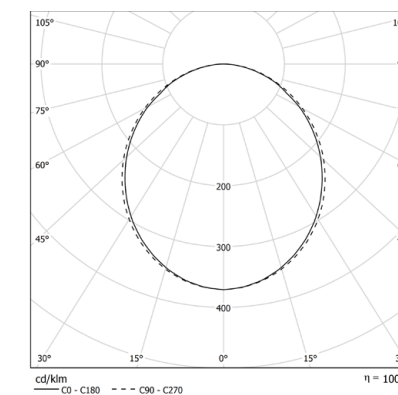


OPTIC

Methacrylate satin antistatic diffuser screen, UGR<22 to be ordered separately (see accessories page 200).



IP 54 A++



* For single installation, add 15mm at the profile length for the end cap kit.

* For continuous rows, add to the sum of the profile lengths $1,5mm \cdot (n^{\circ} \text{ fixture} - 1)$ for the gasket and 15mm for the end cap kit.

COLOUR TEMPERATURE //

4 0 0 0 K

COD	💡	lm	mm
43AA45L4HP54	45W 4000K	4986	1130
43AA57L4HP54	57W 4000K	6233	1410
43AA68L4HP54	68W 4000K	7064	1690

3 0 0 0 K

COD	💡	lm	mm
43AA45L3HP54	45W 3000K	4722	1130
43AA57L3HP54	57W 3000K	5932	1410
43AA68L3HP54	68W 3000K	6690	1690

ACCESSORIES



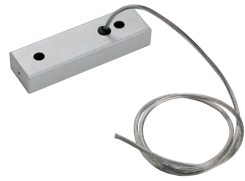
43AA1354
Single wire 1500mm long adjustable suspension kit.



43AA133054
Single wire 3000mm long adjustable suspension kit.



43AA1454
Kit for ceiling mounting.



43AA1654
3 poles-ceiling rose power cable. Cable length 2000mm.



43AA165P54
5 poles-ceiling rose power cable. Cable length 2000mm.



43AA0954
End caps kit for suspended and ceiling version.



43AA1154
Linear joint for suspended and ceiling version.



43PG1133
43PG1413
43PG1693
43PG2533
43PG3093
PG diffuser from 1133/1413/1693/2533/3093mm.



43PG10000
PG metacrilate diffuser, 10m coil to be measured and cut on site to provide continuous gap-free light diffusion.

TECHNICAL NOTE

CONTINUOUS ROW INSTALLATION

