

EUROSTANDARD PLUS TRACK DALI

The EUROSTANDARD PLUS TRACK DALI is a system of three-phase dimmable tracks with three circuits, available in 4 different lengths for installation on the ceiling, recessed or suspended.

The possibility of positioning the fittings in various design schemes, without having to modify the original installation meets any environment's lighting requirements. The number of lights can also be increased or decreased, changing the illumination.

SPECIFICATIONS

- The conductors are integrated in the track by means of rigid extruded profile made from insulating material guaranteeing high dielectric strength.
- The 3 separate circuits consisting of 3 phase conductors and a common neutral allow for 3 lighting configurations to be switched individually. In case of single phase supply the maximum loading must be of 16A (3500 VA) and can be divided among the 3 circuits.
- The 3-phase supply allows for an overall loading of 16 A (10500 VA) which can be divided among the 3 circuits (3x3500 VA).
- The earth positioned on the side leads to an asymmetrical structure of the track. As a consequence couplers must be selected carefully.

BODY

Manufactured from die-cast aluminum.

LEGAL REFERENCES

In compliance with the safety standards EN 60 598-1 and UNI EN 12464-1 (lighting for working places).

CERTIFICATIONS

CE IP20



COLOURS

White RAL 9003 - Code: B

Anodized - Code: C4 (not available for "H" version)

Black RAL 9011 - Code: C8

ON REQUEST

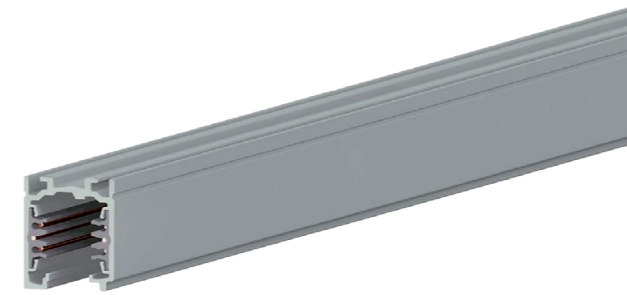
- Recessed frameless version

VERSIONS

EUROSTANDARD PLUS TRACK DALI
 EUROSTANDARD PLUS TRACK DALI RECESSED
 EUROSTANDARD PLUS TRACK DALI H
 ACCESSORIES



EUROSTANDARD PLUS TRACK DALI

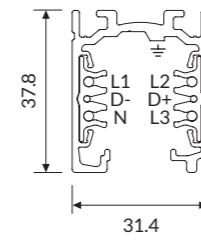


Dimmable version

IP 20

COD

15AA1D	1mt electrified track
15AA2D	2mt electrified track
15AA3D	3mt electrified track
15AA4D	4mt electrified track



* The cross section view shows the position of each line.

EUROSTANDARD PLUS TRACK DALI RECESSED

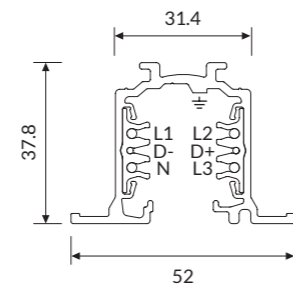


Dimmable version for recessed installation

IP 20

COD

15AA1DI	1mt electrified track
15AA2DI	2mt electrified track
15AA3DI	3mt electrified track
15AA4DI	4mt electrified track



* The cross section view shows the position of each line.



EUROSTANDARD PLUS TRACK DALI H



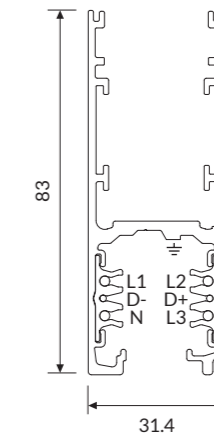
Dimmable version

IP 20

Possibility of using the upper part as a cable passage, or as housing for indirect luminaires or emergency groups.

COD

15AA1DH	1mt electrified track
15AA2DH	2mt electrified track
15AA3DH	3mt electrified track
15AA4DH	4mt electrified track



* The cross section view shows the position of each line.

ACCESSORIES



16AA165P

5 pole-ceiling rose power cable.
Cable length 2000mm.



15AA13D
15AA13DH: for H version

Steel cable suspension kit.
Cable length 1500mm.



15AA1330D
15AA1330DH: for H version

Steel cable suspension kit.
Cable length 3000mm.



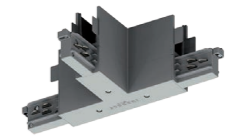
15AA06DXD
15AA06SXD
15AA08DXD
15AA08SXD

T coupler ON-OFF / DALI
250V-50Hz max 16A
for DALI version.



15AA06DXDI
15AA06SXDI
15AA08DXDI
15AA08SXDI

T coupler for recessed version.



15AA06DXDH
15AA06SXDH
15AA08DXDH
15AA08SXDH

T coupler ON-OFF / DALI
250V-50Hz max 16A
for H version.



15AA09D

End cap for DALI version.



15AA09DI

End cap for recessed version.



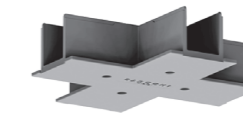
15AA09DH

End cap for H version.



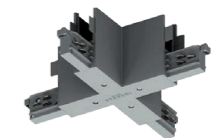
15AA07D

X coupler ON-OFF / DALI
250V-50Hz max 16A
for DALI version.



15AA07DI

X coupler for recessed version.



15AA07DH

X coupler ON-OFF / DALI
250V-50Hz max 16A
for H version.



15AA09ELDXD
15AA09ELSXD

Live end 250V-50Hz max16A
for DALI version.



15AA09ELDXDI
15AA09ELSXDI

Live end 250V-50Hz max16A
for recessed version.



15AA09ELDXDH
15AA09ELSXDH

Live end 250V-50Hz max16A
for H version.



15AA11D

Concealed straight coupler
ON-OFF / DALI
250V-50Hz max 16A.



15AA12D

Flexible coupler ON-OFF / DALI
250V-50Hz max 16A
for DALI version.



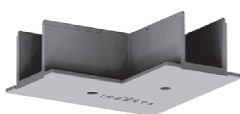
15AAGP1D

Additional IP40 cover strip for
DALI version. Length 1000mm.



15AA05DXD
15AA05SXD

L coupler ON-OFF / DALI
250V-50Hz max 16A
for DALI version.



15AA05DXDI
15AA05SXDI

L coupler for recessed version.



15AA05DXDH
15AA05SXDH

L coupler ON-OFF / DALI
250V-50Hz max 16A
for H version.



15AA14D

Ceiling mounting.



15AA17D

Bracket for recessed installation.



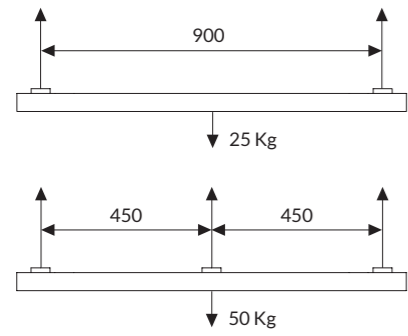
15AATC

Cutting tool for track conductors.

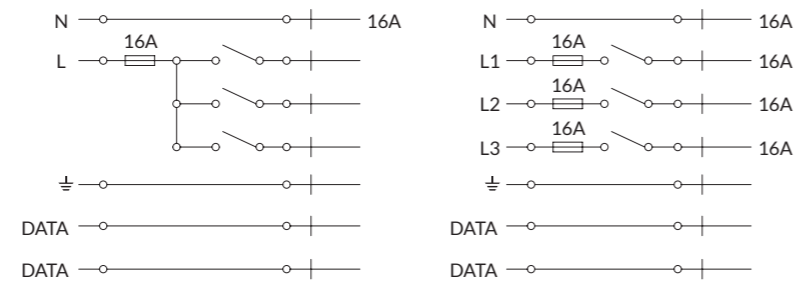
TECHNICAL NOTE

WEIGHT AND ELECTRICAL DIAGRAMS

Weight



Electrical diagrams



COMPATIBLE PRODUCTS



Q I
p. 420



SEMPLICE
p. 450



TERES
p. 480



WALLY
p. 552



REM
p. 434

EXAMPLE OF INSTALLATION DIAGRAM WITH ITEM CODES

