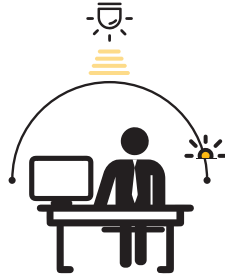


**TECHNICAL NOTE**

PRESENCE SENSOR - CONSTANT LIGHT



With sufficient natural light, the light will not switch on even if a presence is detected. Manually adjustable light level.



With insufficient natural light, the sensor will switch on the light when a presence is detected.



The light switch off automatically when no movement is detected. Manually adjustable hold time.