



/ 106

CL LED

107 /

CL LED

Design ESSE-CI

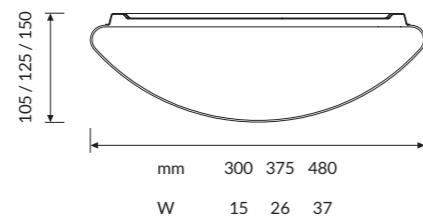


η > 90 lm/W

CRI > 80

IP 40

UGR < 22





C L L E D

Versatile and functional LED fixture made with powder coated steel base and frosted PMMA diffuser. LED technology with high efficiency diodes powered from OSRAM DURIS E5 current.

The standard wiring on/off is 220-230V 50-60HZ. Version with the microwave sensor for presence detecting and inhibition in function of natural light is also available.

SPECIFICATIONS

- Colour temperature: 3000K/4000K
- CRI>80
- Mac Adams 4
- Life Time: L80/B50 50.000h
- 5 years complete warranty
- Eye safety: risk-free (RG 0) in accordance with EN62471:2009

OPTICS

PMMA diffuser for homogenous emission.

BODY

White epoxy-powder coated steel-sheet body.

LEGAL REFERENCE

In compliance with the safety standards EN 60 598-1 and UNI EN 12464-1 (lighting for working places).

CERTIFICATIONS

CE IP40
ErP Class: A*

ON REQUEST

- Wiring DALI dimmable - Code: RDD (verify the version available)
- Wiring with emergency kit - Code: EM for 1 hour / EM3H for 3 hours (verify the version available)

VERSIONS

CL LED
CL LED SENSITIVE



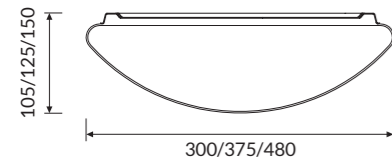
/ 1 1 0

CL LED

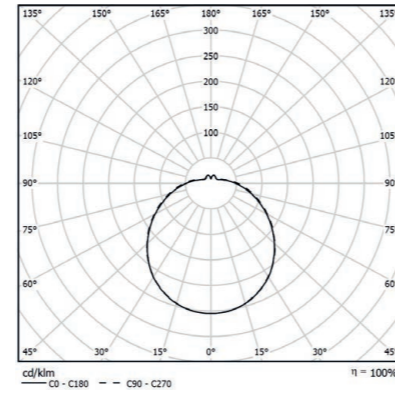


OPTIC

PMMA diffuser for homogenous emission.



IP 40 A+



COLOUR TEMPERATURE //

4 0 0 0 K

COD		lm	Ø (mm)
51MO15L4	15W 4000K	1139	300
51MO26L4	26W 4000K	2230	375
51MO37L4	37W 4000K	3300	480

3 0 0 0 K

COD		lm	Ø (mm)
51MO15L3	15W 3000K	1095	300
51MO26L3	26W 3000K	2158	375
51MO37L3	37W 3000K	3219	480



CL LED

1 1 1 /

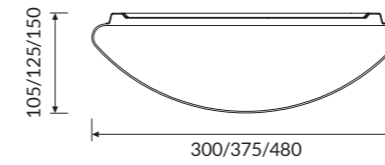
CL LED SENSITIVE



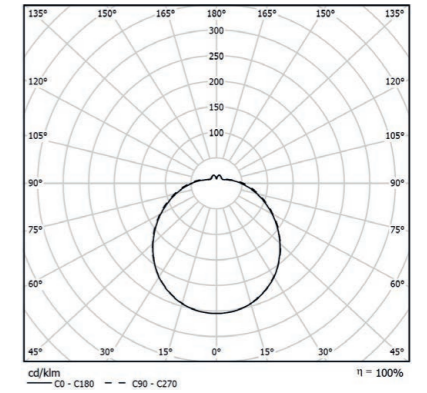
OPTIC

PMMA diffuser for homogenous emission.

Integrated presence sensor.



IP 40 A+



COLOUR TEMPERATURE //

4 0 0 0 K

COD		lm	Ø (mm)
51MO15L4S	15W 4000K	1139	300
51MO26L4S	26W 4000K	2230	375
51MO37L4S	37W 4000K	3300	480

3 0 0 0 K

COD		lm	Ø (mm)
51MO15L3S	15W 3000K	1095	300
51MO26L3S	26W 3000K	2158	375
51MO37L3S	37W 3000K	3219	480

TECHNICAL NOTE

PRESENCE SENSOR - CONSTANT LIGHT



With sufficient natural light, the light will not switch on even if a presence is detected. Manually adjustable light level.



With insufficient natural light, the sensor will switch on the light when a presence is detected.



The light switch off automatically when no movement is detected. Manually adjustable hold time.