

// Company Profile

THE BRIGHT SIDE OF YOUR

MOOD

esse-ci
LIVING LIGHT

Index

Corporate	3
ACHIEVEMENTS	4
WE GIVE LIGHT TO EVERY SERVICE	5
OUR SERVICE AS A PRODUCT	5
THE RIGHT TECHNOLOGY FOR EVERY REQUIREMENT	6
GLOBAL DISTRIBUTION	7
Technology	8
HUMAN CENTRIC LIGHTING	9
WIRELESS SYSTEM	11
QUALITY AND SAFETY	12
LED FOR SPECIALIZED APPLICATIONS	13
Products	14
PRODUCTS	15
BIM LIBRARY	19
Target	20
Sponsorship	37

C O R P O R A T E

Lighting solutions Made in Italy.

Since 1984 we have designed and manufactured interior lighting solutions, thinking of light as a factor able to promote the growth of our customers' business.

Achievements

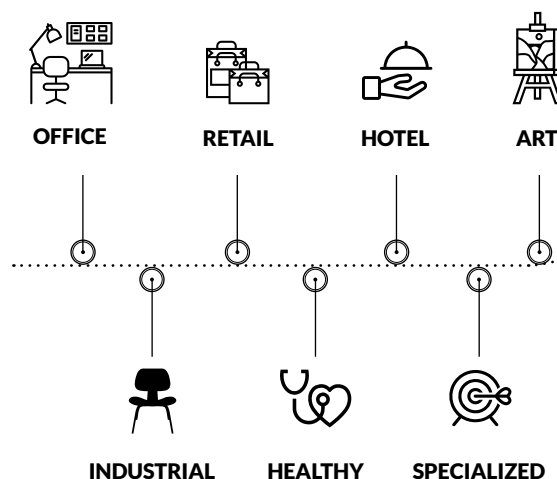
Versace // Balenciaga // Yamamay Beach
// Baldinini Trend // Orofino Jewelry Store
// Dainese D-Store // Pinokkio // Maison
Et Cadeaux // La Casa del Materasso
// Marynda Boutique // Galleria sede
ACEA // Isola dei Tesori // Pet Store //
Meggetto Calzature // Università Ca'
Foscari // Campus Humanitas University
// New York University // Ikea // Burger
King // McDonald's // Conad // Expert
// Famila // // Supermercati Emisfero //
Happy Casa // Iperconad // SHR Italia
// Supermercati A&O // Pam Panorama
// Galleria D'arte Empreintes // UCD

Theatre // Autodromo Nazionale Di
Monza // The Carnegie Library // New
York University // Plessi Museum // Uffici
Team Akrapovic // Slovenian Football
Association // Youth Hostel Postojna
// Metropolitana Belomorskaya //
Uffici RFI Rete Ferroviaria Italiana //
Palazzo Giacomo Dal Monte Casoni //
Uffici Deloitte // XDGA Head Offices //
AMG Mercedes // KIA Motors // Tesla
Showroom // Peugeot // Ford // BMW
Showroom // Raven Russia Logistic
Center // Villa Urška

We give light to every service

target

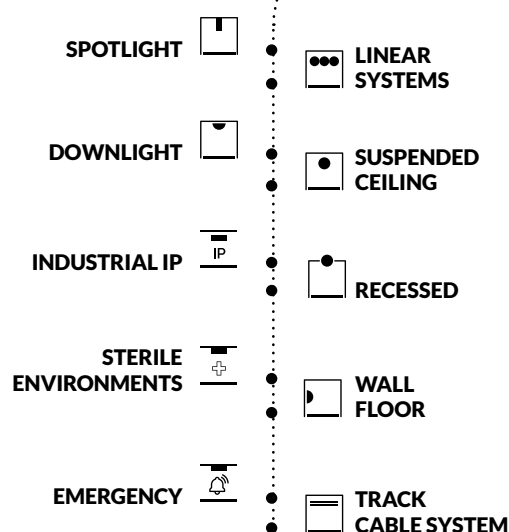
Initially, our products were intended for the industrial market. Today, we offer a **complete architectural range of solutions for interiors**, with an emphasis on **continuous light lines** to meet the specific needs of the service world: from **offices** to all kinds of **stores**, from large scale retail channels to large public and private infrastructures such as **schools, hospitals, museums**.



Our service as a product

We can combine the **flexibility** of an artisan workshop with the **sophistication** of a boutique and the **typical customer service** of big companies. The counselling services continues, from the design phase to technical assistance, together with the **efficient support** offered by a team of highly qualified specialists.

typology



The right technology for every requirement

A team of **skilled engineers** guides our **research and development activity**, the heart of our company and creative laboratory. They draw inspiration from various sources and create the best lighting solutions. Our design ideas, born from our competence, meet the inputs coming from the **global lighting market**, the rapidly **evolving LED and material technology**, our collaboration with the **most renowned European design studios** and the continuous drive for **innovation required by our customers**. Not least, our purpose to focus the lighting values on the human being using the **HCL technology**.



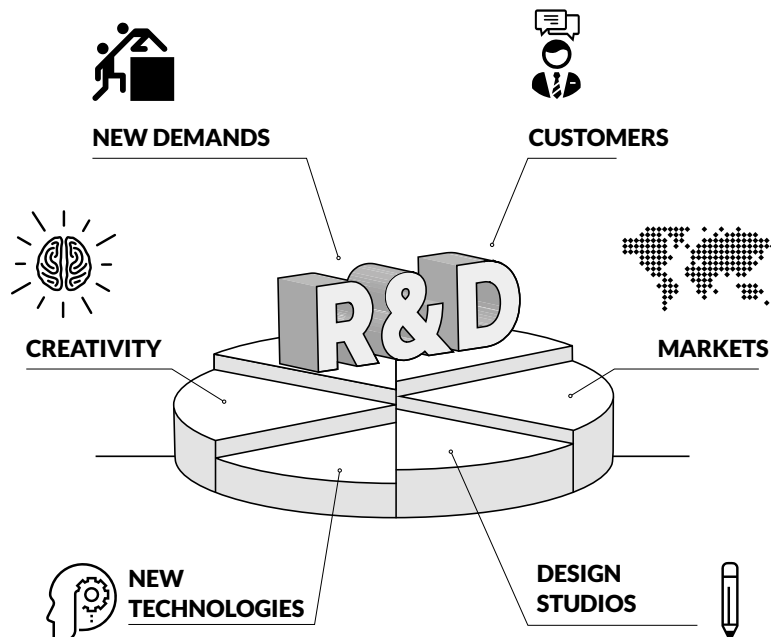
RESEARCH &
DEVELOPMENT



TAILORED
LIGHTING



QUALIFIED
TEAM



A LABORATORY OF IDEAS

Global distribution

Thanks to their innovative force, **our products are chosen by the world markets:** from the competitive Europe to the stimulating Africa, meeting the sophisticated tastes of the Middle East and the East Asia, up to North America.

GLOBAL
DISTRIBUTION



TECHNOLOGY

- HUMAN CENTRIC LIGHTING
- WIRELESS SYSTEM
- QUALITY AND SAFETY
- LED FOR SPECIALIZED

Innovative technologies.

From our heritage and design tradition, we have learned to pay **attention** to the performances to which we gave the **best design** over the years thanks to our investments in innovative materials and technology.

Human Centric Lighting

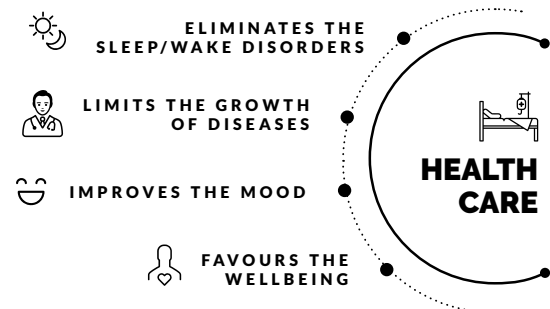
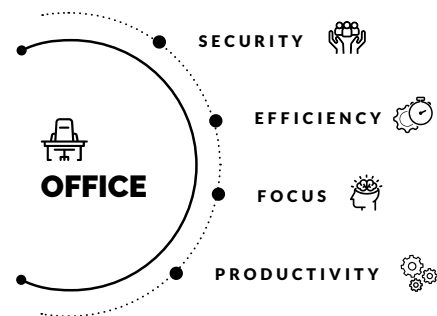


It is a system that demonstrates the beneficial and positive effects of **light** on **health**, **general wellbeing**, **quality of life** and daily activities of people, with short and long-term effects.

HUMAN CIRCADIAN RHYTHM

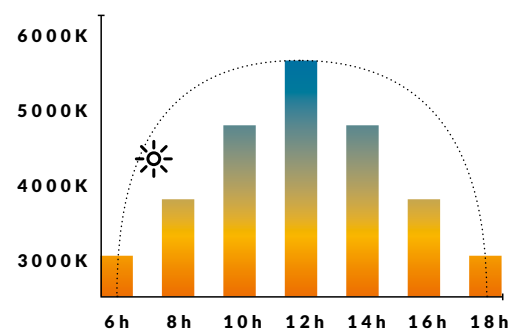
Natural light plays an important role in the regulation of human behaviour and in the correct stimulation of the “biological clock”.

The circadian rhythm of light is used to promote **natural day-night cycle** or simulate it in those environments where the natural light is lacking thus **increasing the well-being**.



HCL SYSTEM

Light produced by the **Human Centric Lighting** system is able to **regularise the biorhythms**, **improve the mood**, help with **focus** and concentration, restrict the growth of certain **diseases** and increase people **performances**.



LIGHT AS A SOURCE OF WELLNESS

The dynamic changes of light brought by the Human Centric Lighting system equals the sunlight conditions of the geographic environment where the building is located.

By changing the **light flux and color** and adapting the artificial light to the season and the time of the day,

***we can reproduce the natural rhythms in interiors
and get several benefits for the human being.***



IT IMPROVES
THE SIGHT



IT FAVOURS THE
BIOLOGICAL
NEEDS



IT REDUCES
WASTE

HCL SOLUTIONS



ABSENT HCL



BEN HCL



BRIGHT HCL



GROOVE HCL



HALL LED PRO
HCL



HALL LED
PROFLEX HCL



SEMPLICE HCL



HUMAN CENTRIC LIGHTING

WIRELESS system

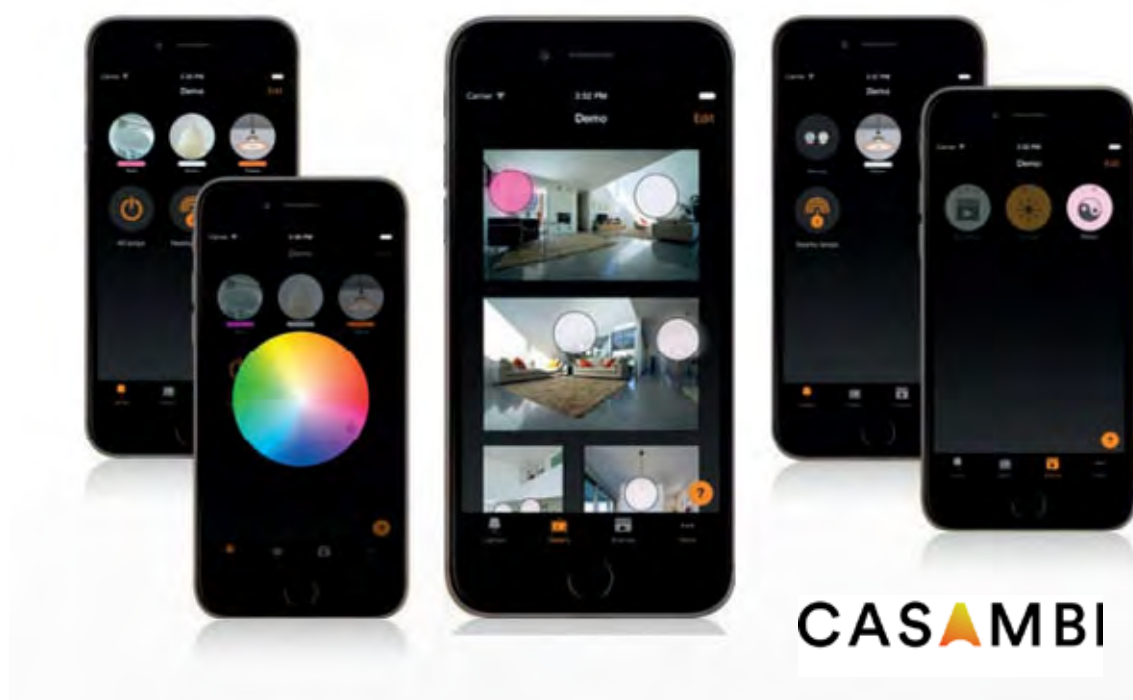
The Internet Of Things will be the next industrial revolution and **intelligent lighting will play a decisive role in this process.**

Modern lighting systems are designed as an integral element of the ambience comfort and the professional management of energy efficiency.

Managing also means **simplifying** the procedures of control, monitoring the activities and performance of the lighting,

focusing on the end user's needs.

ESSE-CI introduces a range of solutions based on Casambi platform, that, by means of a remote control via Apps on smartphones or tablets, allows to manage the entire network of devices or wireless sensors.



Quality and safety

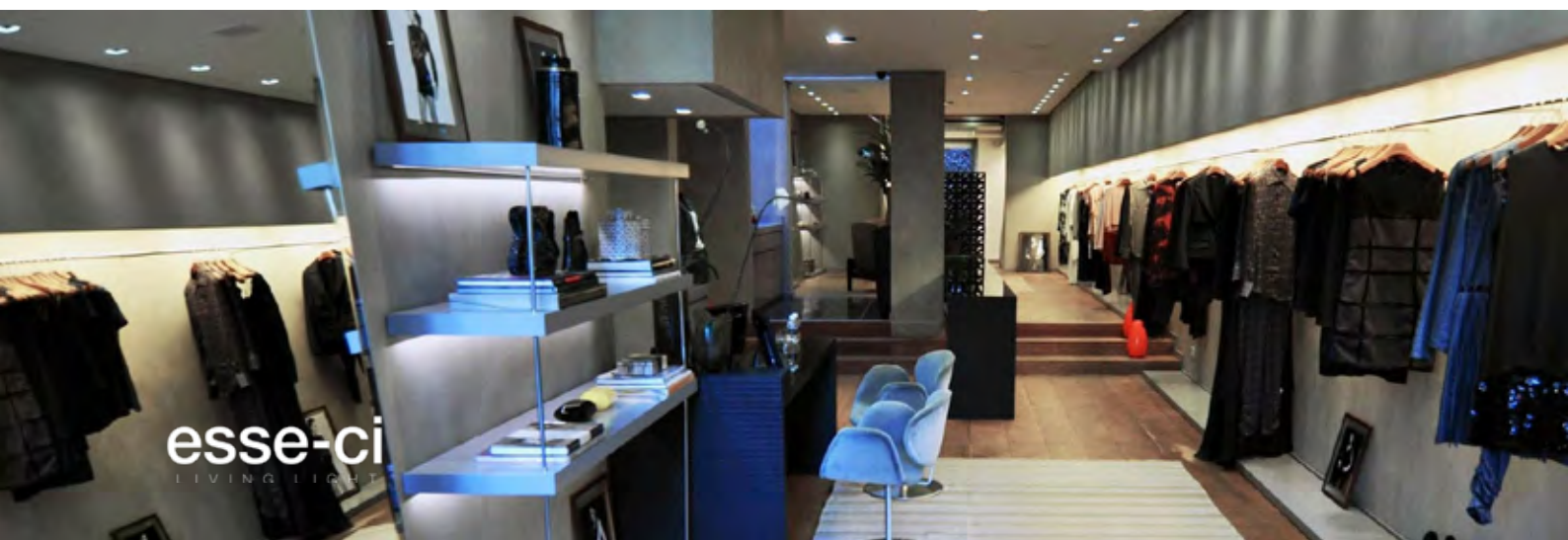
LIGHTING WITHOUT RUINING

The task of lighting in product presentation is not simply to illuminate: it must have the most suitable **colour temperature**, the specific **colour rendering index**, **thermal management** consistent with the environment and **certified to be harmless**.

The list of products that poorly respond to heat and IR radiation is very wide: fabrics fading, cosmetics blending, bakery drying out, chocolate and sweets melting.

ESSE-CI has a deep sensibility, a carefull **attention to well-being** and several years of experience: since a long time we have been successfully lighting up the Retail world and we carefully choose innovative technologies, always favouring high quality LEDs emitting light **free from any harmful IR or UV radiation**.

The risk that colours and materials are altered is reduced to the minimum.



LED for specialized applications

LED colours for specialized applications: to emphasize **what consumers really want** and give products an attractive and vivid colour.

FOOD LED MODULES

Specific LED modules to valorise **meat, bread/pastry, fish** and **vegetables**: the food just looks better and it's visually more attracting. The white elements remain white and the colors are more brighter and intense.

A specialized optics and a dedicated colour spectrum for fresh foods create further attractiveness and enhance quality, **without generating heat or harmful radiation** that can ruin the products appeal.

FASHION LED MODULES

Light spectrum optimized for warm and saturated colours, together with a pure and cold white, **makes the clothes shine** creating a harmonious environment.

Lighting plays a key role in product presentations, especially when it comes from the fashion world: it's very important to emphasize materials, colors and show the quality level of the garments.



PRODUCTS

With every need, we know how to offer unique solutions

We have made the widest range of **flexible solutions**, by challenging our knowledge and breaking patterns. We are able to meet the **specific needs of the service world**: from offices to all kinds of stores, from large scale retail channels to large public and private infrastructures such as schools, hospitals, museums.



linear system



BRIGHT

SUSPENDED-CEILING // RECESSED
// WALL



DIAMANTE

SUSPENDED-CEILING // RECESSED



GROOVE

SUSPENDED-CEILING // RECESSED



GROOVE DISPLAY

RECESSED



HYPE

SUSPENDED-CEILING



LINT EVO

SUSPENDED



OVVIO DISPLAY LED

RECESSED



OVVIO LED

SUSPENDED-CEILING // WALL



PROFREEL

SUSPENDED-CEILING // RECESSED
// WALL



SEMPLICE

SUSPENDED-CEILING // WALL-
FLOOR



VECTOR

SUSPENDED-CEILING



suspended ceiling



BEN

SUSPENDED-CEILING // RECESSED



CL LED

CEILING



CRATER

SUSPENDED



DIMPLES

SUSPENDED-CEILING // RECESSED



LITE

SUSPENDED-CEILING // RECESSED



LOGIC

CEILING // WALL



RGL LED

CEILING





recessed



ABSENT
RECESSED



BEN
RECESSED // SUSPENDED-CEILING
// WALL



DIMPLES
RECESSED // SUSPENDED-CEILING



LITE
RECESSED // CEILING



downlight



BOX LED



CUBE MINI



**HALL LED
CEILING EVO**



**HALL LED
CEILING IP65**



HALL LED DEEP



**HALL LED
ESSENTIAL**



**HALL LED
ESSENTIAL
CEILING**



HALL LED FL



HALL LED IP65



HALL LED PRO



**HALL LED
PROFLEX**



KLIP



KLIP FLEX



OTELLO LED





spotlight



LUDO



LUDO LINEAR



QI



TERES



TERES EXTE



TERES LV



WALLY



WALLY EXTE



track / cable
systems



**EUROSTANDARD
TRACK DALI**



**EUROSTANDARD
TRACK DALI
RECESSED**



**EUROSTANDARD
TRACK DALI H**



LV TRACK



**LV TRACK
RECESSED**



GHOSTFEED



wall
floor



BEN

WALL // SUSPENDED-CEILING
// RECESSED



**BRIGHT 45°
WALL**



LOGIC

WALL // CEILING



OVVIO LED

WALL // SUSPENDED-
CEILING



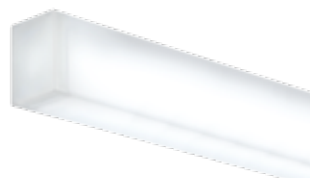
PROFREEL

WALL // SUSPENDED-CEILING
// RECESSED



SEMPLICE

WALL-FLOOR // SUSPENDED-
CEILING



UPLIK

WALL-FLOOR



**industrial
IP**



ERGO

SUSPENDED-CEILING // WALL //
RECESSED



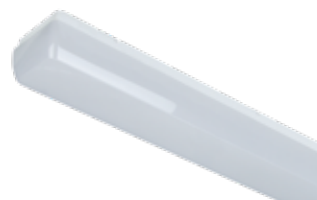
GROOVE IP54

SUSPENDED-CEILING // RECESSED



LINEA IP54

CEILING



PCM LED EVO

CEILING



STILLA

SUSPENDED-CEILING // WALL



**sterile
environment**



ISI LED IP55

RECESSED // CEILING



ISI LED IP65

RECESSED // CEILING



ISIB LED IP54

RECESSED



emergency



REM TRACK

TRACK



REM CEILING

CEILING



REM RECESSED

RECESSED



BIM library

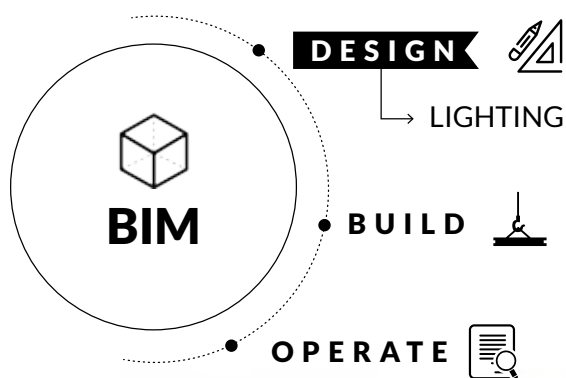


“Building Information Modeling”

The digital representation of the physical and functional characteristics of an object.

BIM offers an intelligent 3D model-based process to create not only a three dimensional representation, but also a dynamic, interdisciplinary, shared and constantly evolving information model that holds many data for the development of a project.

ESSE-CI makes available **BIM files for each product**, download them from our website to manage your projects in an easy and efficient way.



TARGET

Adequate lighting to the target group

The protagonist is not the light, but the role it must play.

Light creates atmospheres designed on the customer's needs, **highlights the products**, not itself, and **fits in with the style** and taste of the space that it's asked to light up.

By changing intensity, contrast, colour temperature, direction and uniformity of light, we can create different scenes and follow current trends and emotional needs of the customers.

TARGET

Office

*“ Lighting
increases
concentration ”*



Visualization: Abreu Lawyers Offices (Lisbon, Portugal)

esse-ci
LIVING LIGHT



Visualization: Nauta Duthl Offices (Rotterdam, Netherlands)

esse-ci
LIVING LIGHT



Visualization: Akrapovic Creative Team Offices (Slovenia)

esse-ci
LIVING LIGHT



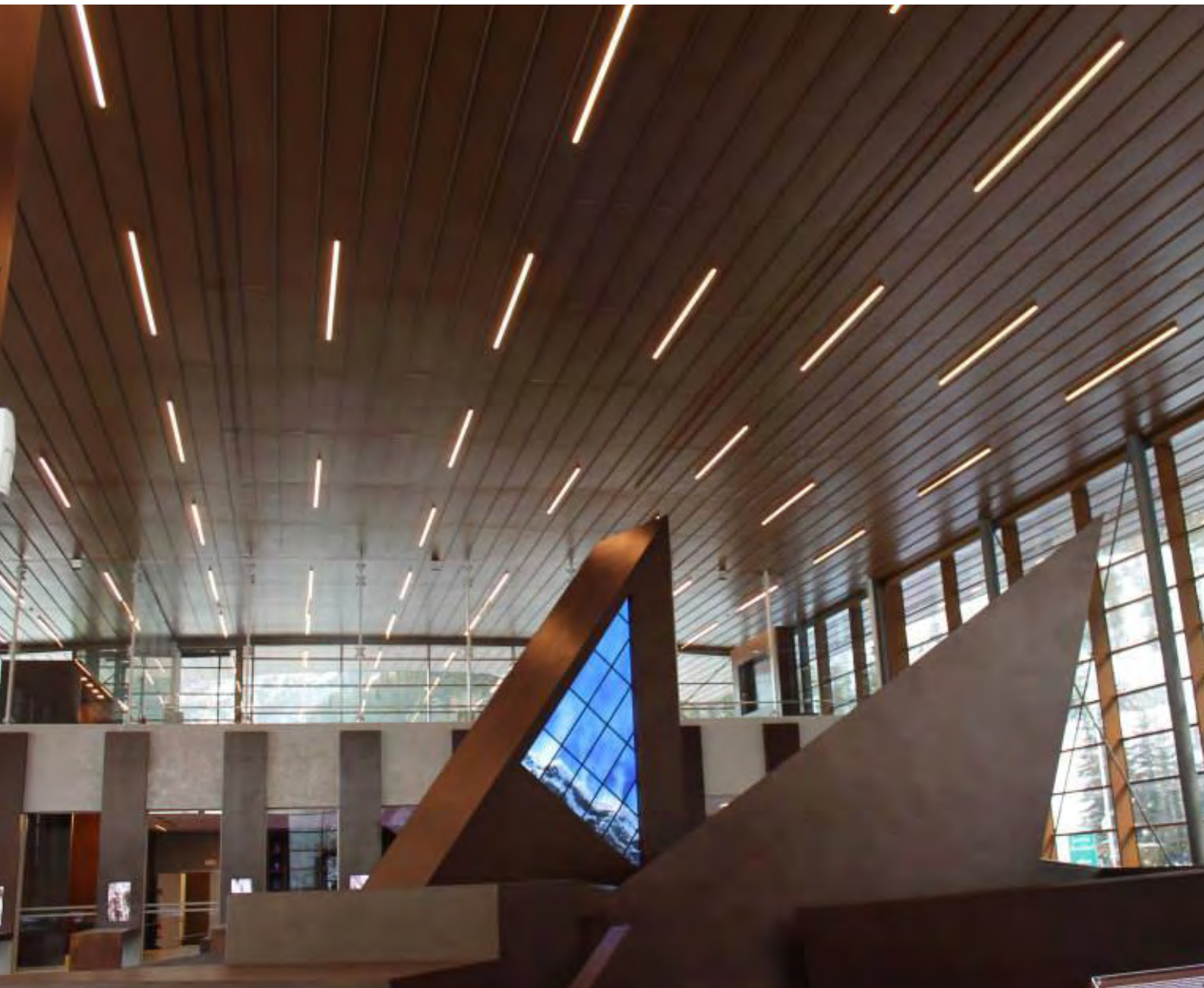
Visualization: Pesarne Grey Offices (Slovenia)

esse-ci
LIVING LIGHT

TARGET

Art

*“ The importance
of conveying
authenticity ”*



Visualization: Plessi Museum (Bozen, Italy)

esse-ci
LIVING LIGHT



Visualization: Ateliers D'art Empreintes (Paris, France)

esse-ci
LIVING LIGHT



Visualization: Museum (Lisbon, Portugal)

Visualization: Giacomo Dal Monte Casoni Palace (Imola, Italy)

esse-ci
LIVING LIGHT

TARGET

Industrial / Wide Areas

“ *broader
horizons* ”



Visualization: Raven Russia Logistics Center (Moscow, Russia)

esse-ci
LIVING LIGHT



Visualization: Metro Belomorskaya (Moscow, Russia)

esse-ci
LIVING LIGHT



Visualization: Hockey Stadium“Home Monitoring Aréna” (Pilsen, Czech Republic)

TARGET

Specialized “emphasising quality”



Visualization: Prezzemolo & Vitale Supermarkets (London, UK)
Visualization: Famila Supermarkets (Caorle, Italy)

esse-ci
LIVING LIGHT



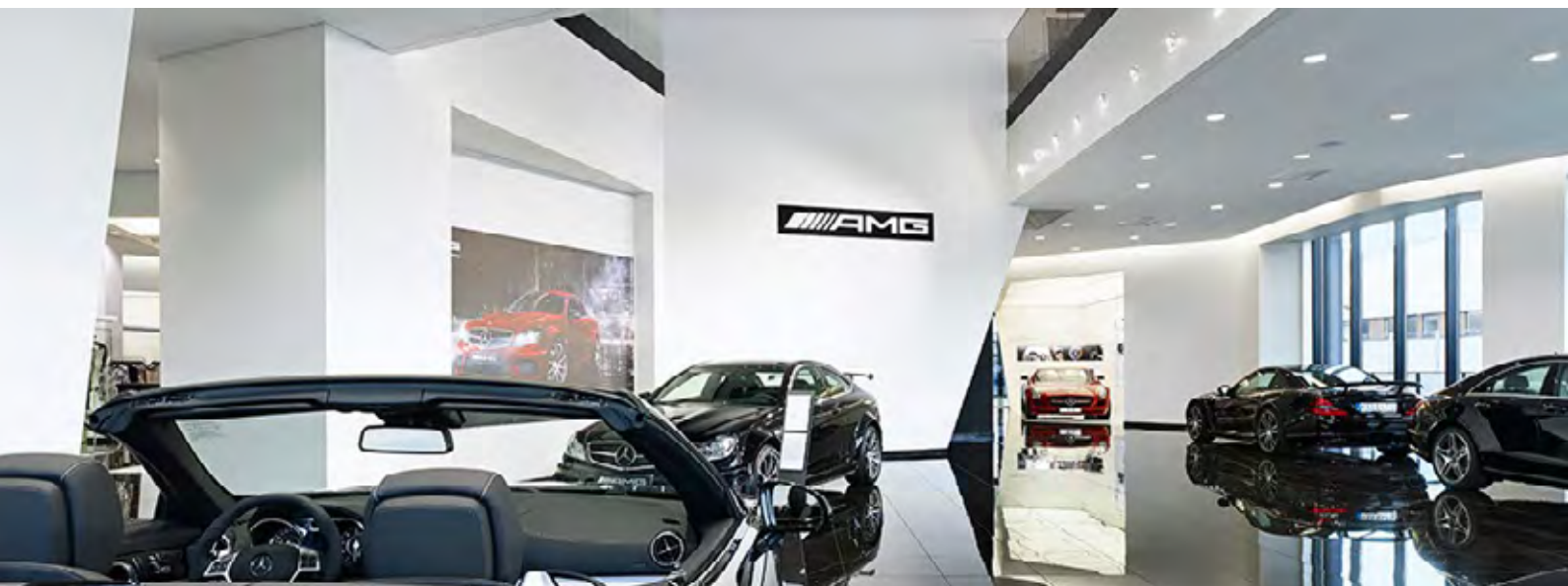
Visualization: Emisfero Supermarkets (Treviso, Italy)

esse-ci
LIVING LIGHT

TARGET

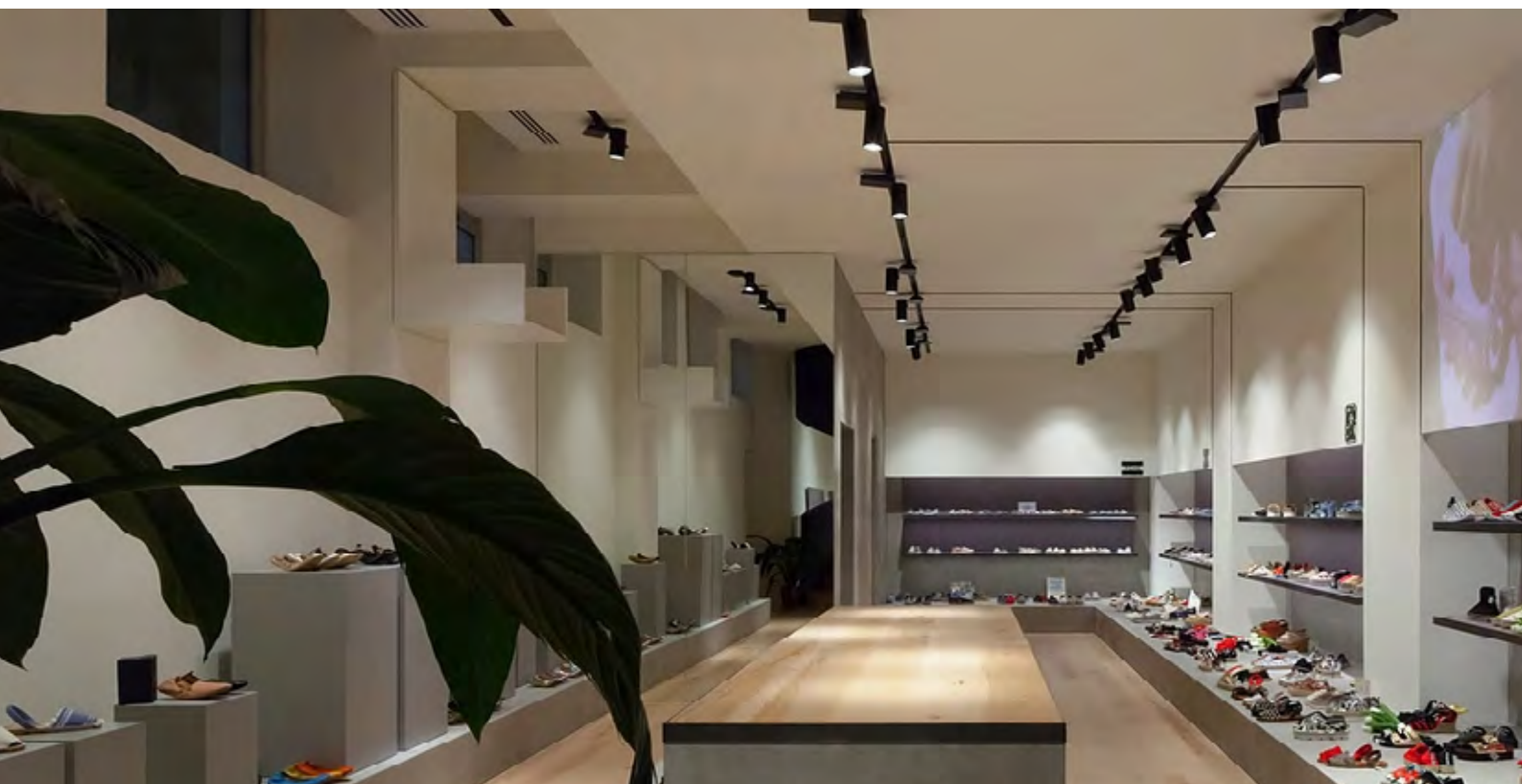
Retail

“ *attract
attention
to the detail* ”



Visualization: AMG Mercedes Showroom (Sweden)
Visualization: Marynda Boutique (Avezzano, Italy)

esse-ci
LIVING LIGHT



Visualization: OroFino Jewelry (Padua, Italy)

Visualization: ARTCRAFTS – Fashion Showroom (Milan, Italy)

esse-ci
LIVING LIGHT



- ^ Visualization: La Casa del Materasso (Treviso, Italy)
- > Visualization: Balenciaga (Florence, Italy)
- ✓ Visualization: Tesla Showroom (Amman, Jordan)



Visualization: KIA-FORD Showroom (Nijmegen, Netherlands)

esse-ci
LIVING LIGHT

Sponsorship

With great enthusiasm and pride ESSE-CI welcomed the opportunity to be actively involved, together with prestigious teachers, in the learning experience intended to **train ambitious young architects**.

Thanks to the skills and experiences we share as a heritage, we build an excellence competence on any issue that composes the design of architecture for the fashion and wellness world.

The aim is **to transfer the sensitivity to the use of lighting in architectural design** as a tool to serve the human being, through a path that will make the future young architects understand the value of light, technology and their conscious use.

FRI

FASHION
RESEARCH
I T A L Y

fashionresearchitaly.org

 YOUNG
ARCHITECTS
COMPETITIONS

youngarchitectscompetitions.com

C o m p a n y P r o f i l e //

esse-ci
L I V I N G L I G H T

ESSE-CI s.r.l.
Viale del Lavoro 25 // 35010 Vigonza (PD) Italy
T. +39 049 8959511 // info@esse-ci.it // esse-ci.it